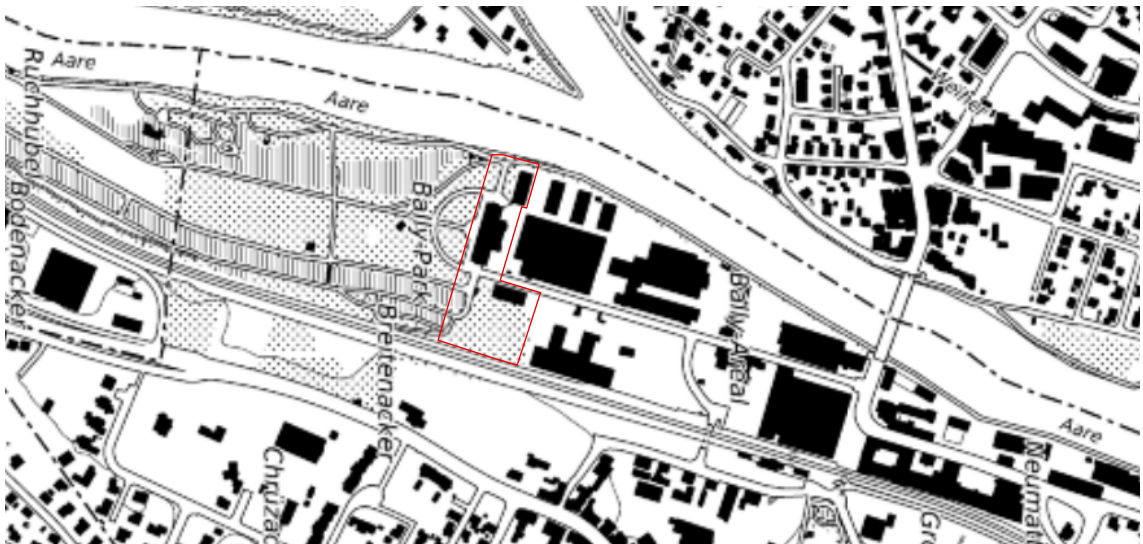


Gestaltungplan Kosthaus

Spezialzone Kosthaus KH
gemäss § 44-47 PBG

7 Beilagen zum Raumplanungsbericht



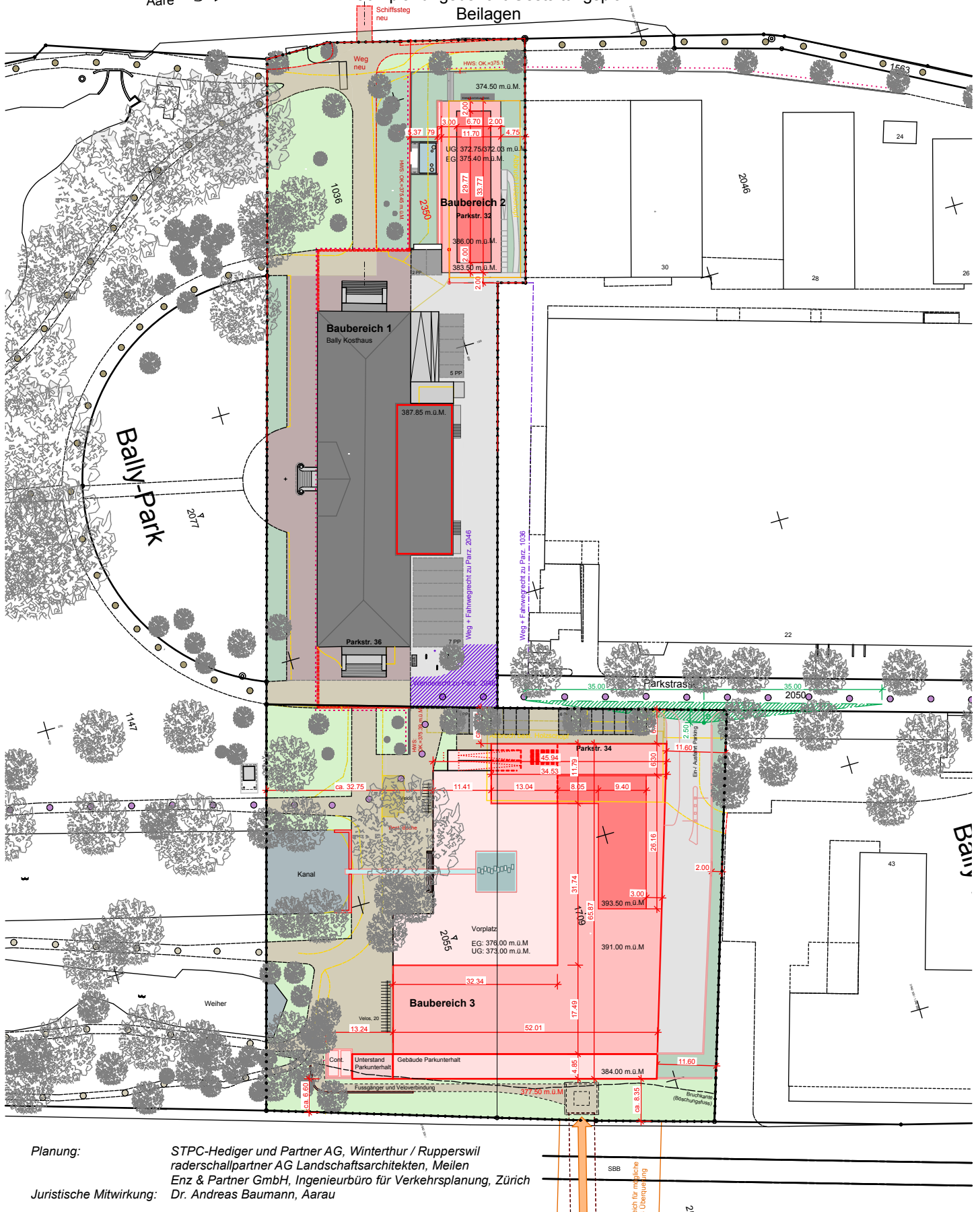
Beilage 1	Gestaltungsplan
Beilage 2	Freiraumkonzept
Beilage 3	Übersichtsplan Referenzprojekte
Beilage 4	Modellfotos
Beilage 5	Bestandesfotos
Beilage 6	Katasterplan
Beilage 7	Referenzprojekt: Baubereich 1
Beilage 8	Referenzprojekt: Baubereich 2
Beilage 9	Referenzprojekt: Baubereich 3

Planung: STPC-Hediger und Partner AG, Winterthur / Rapperswil
raderschallpartner AG Landschaftsarchitekten, Meilen
Enz & Partner GmbH, Ingenieurbüro für Verkehrsplanung, Zürich

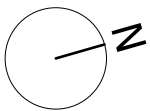
Juristische Mitwirkung: Dr. Andreas Baumann, Aarau

Aare →

Raumplanungsbericht Gestaltungsplan Beilagen

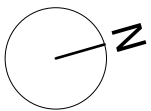
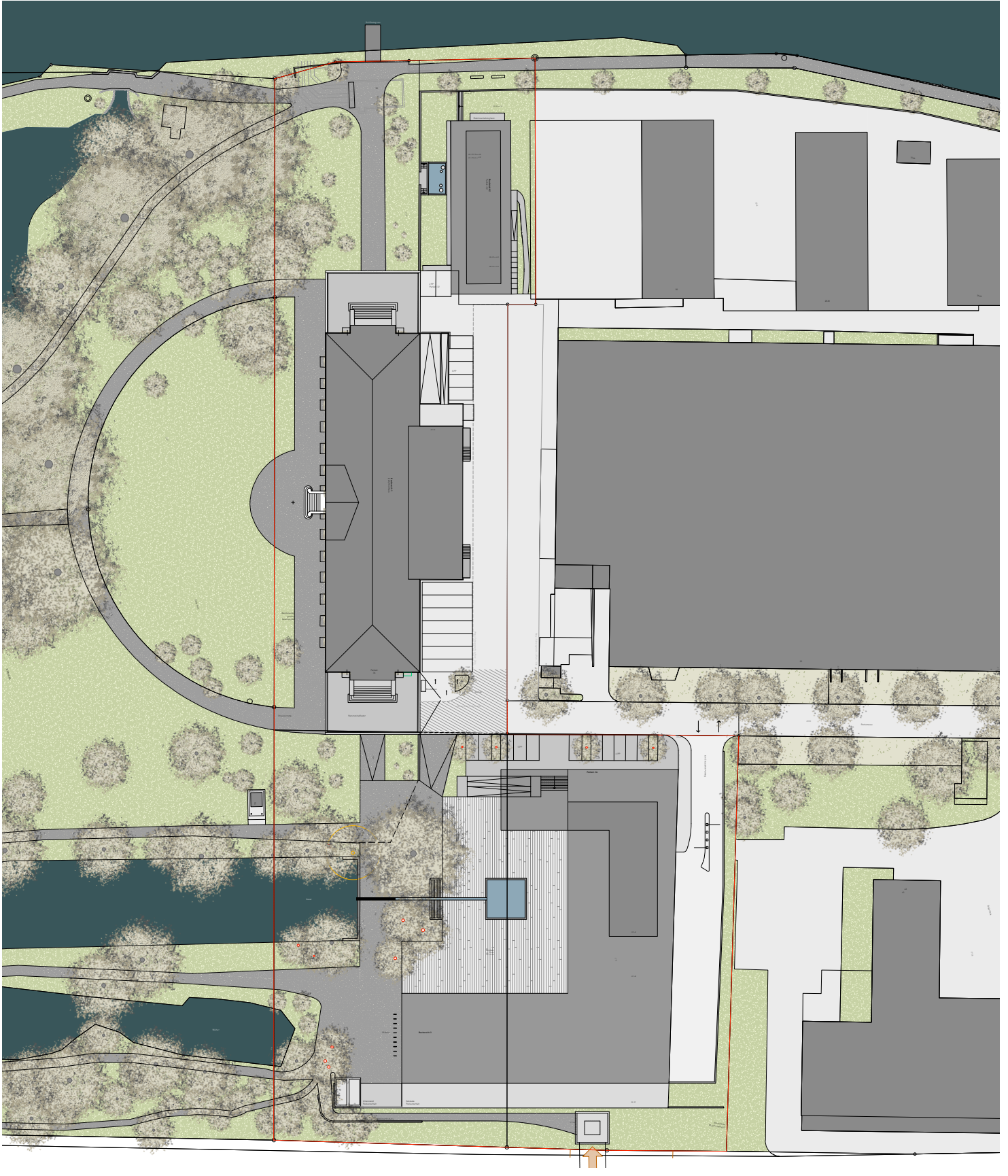


Planung: STPC-Hediger und Partner AG, Winterthur / Ruppertschallpartner AG Landschaftsarchitekten, Meilen
 Juristische Mitwirkung: Enz & Partner GmbH, Ingenieurbüro für Verkehrsplanung, Zürich
 Dr. Andreas Baumann, Aarau



mst 1:1000

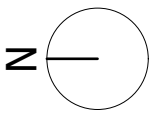
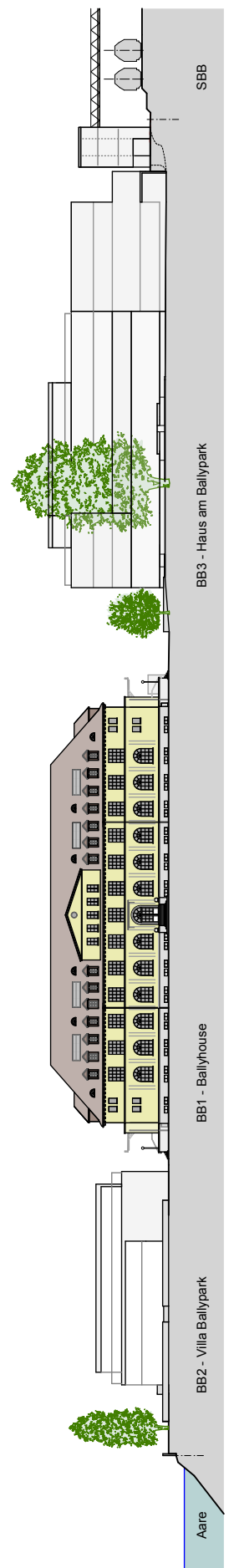
Raumplanungsbericht Gestaltungsplan
Beilagen



mst 1:1000

Freiraumkonzept, raderschallpartner AG

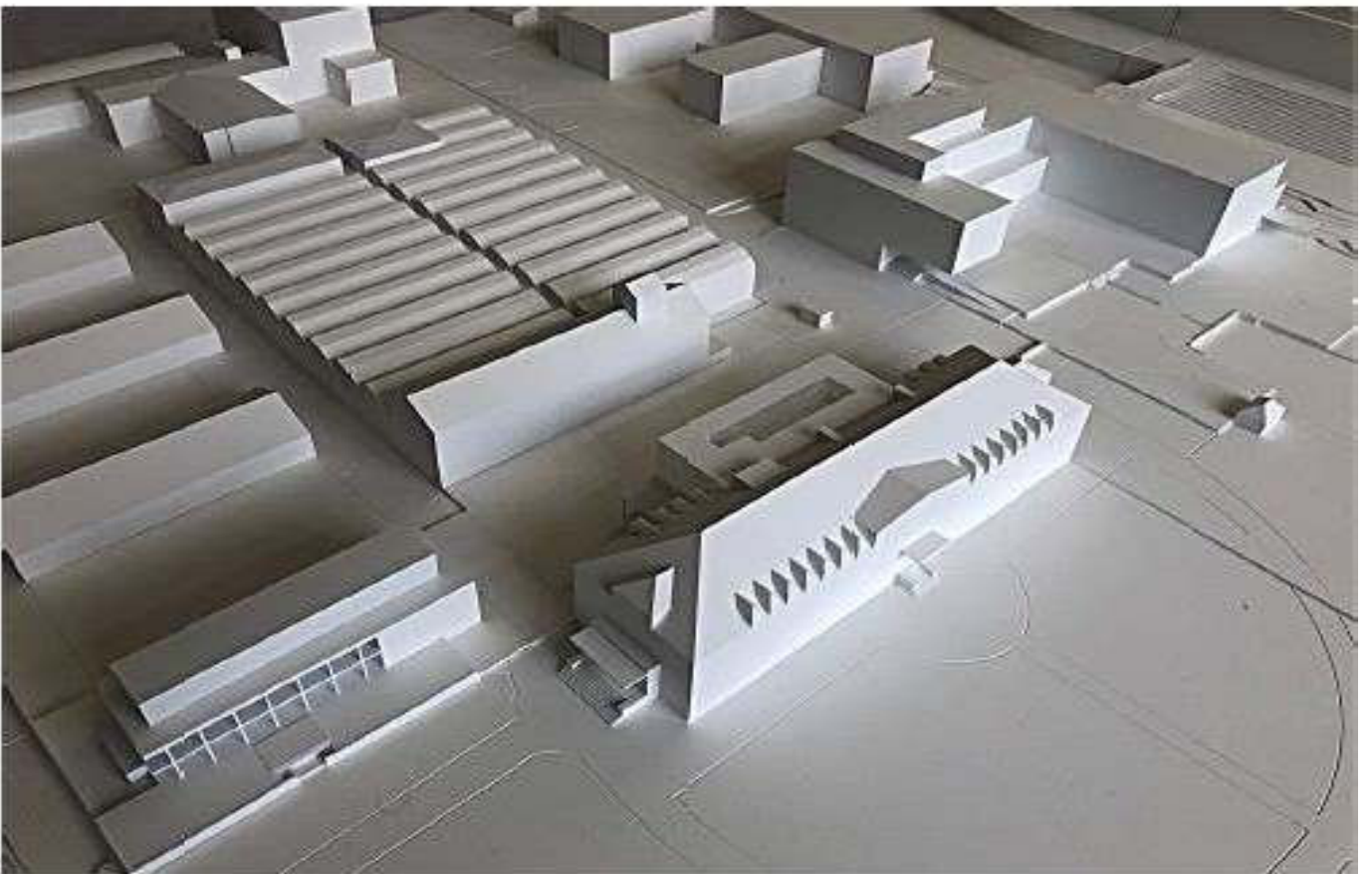
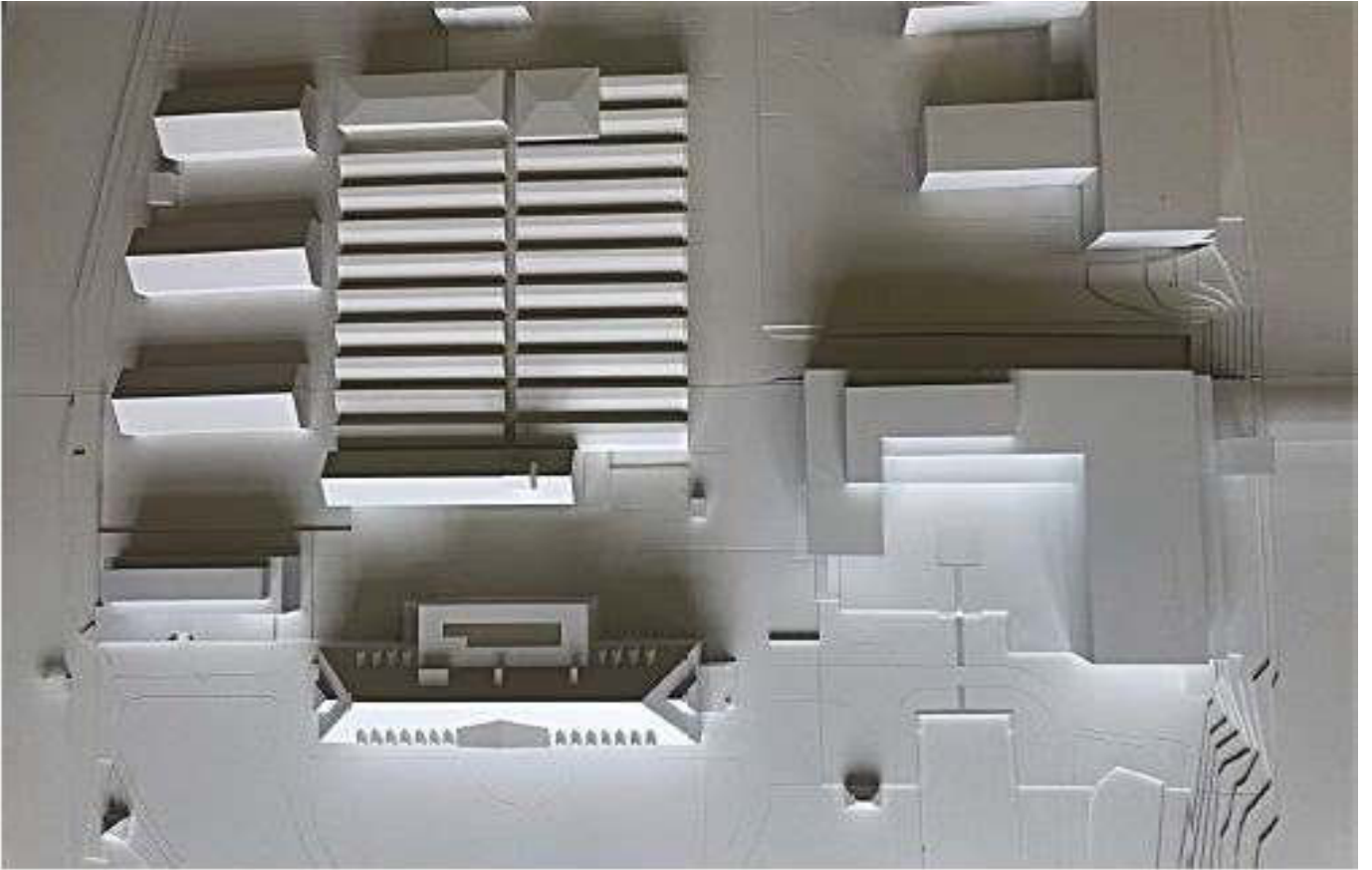
Beilage 2

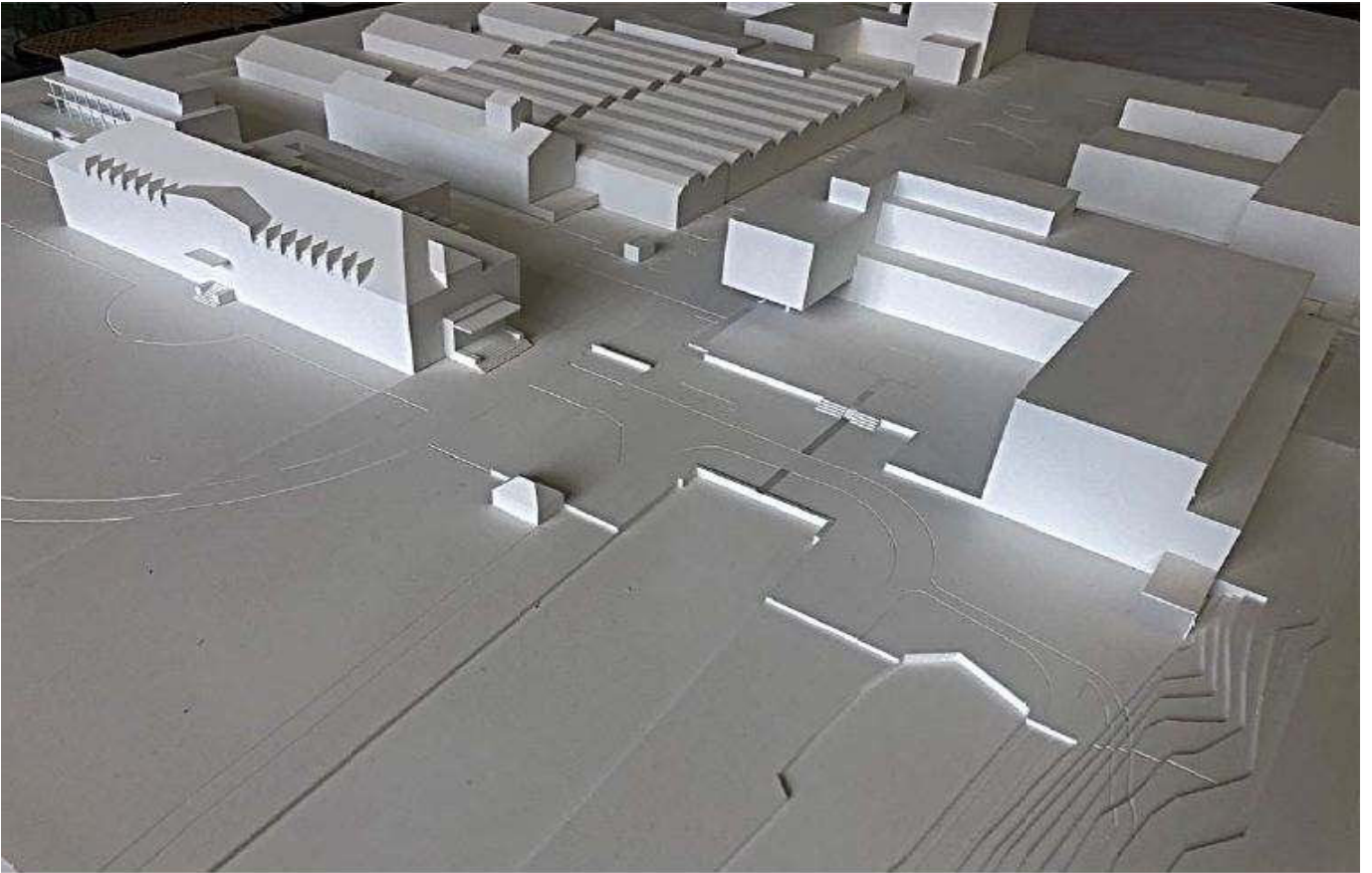


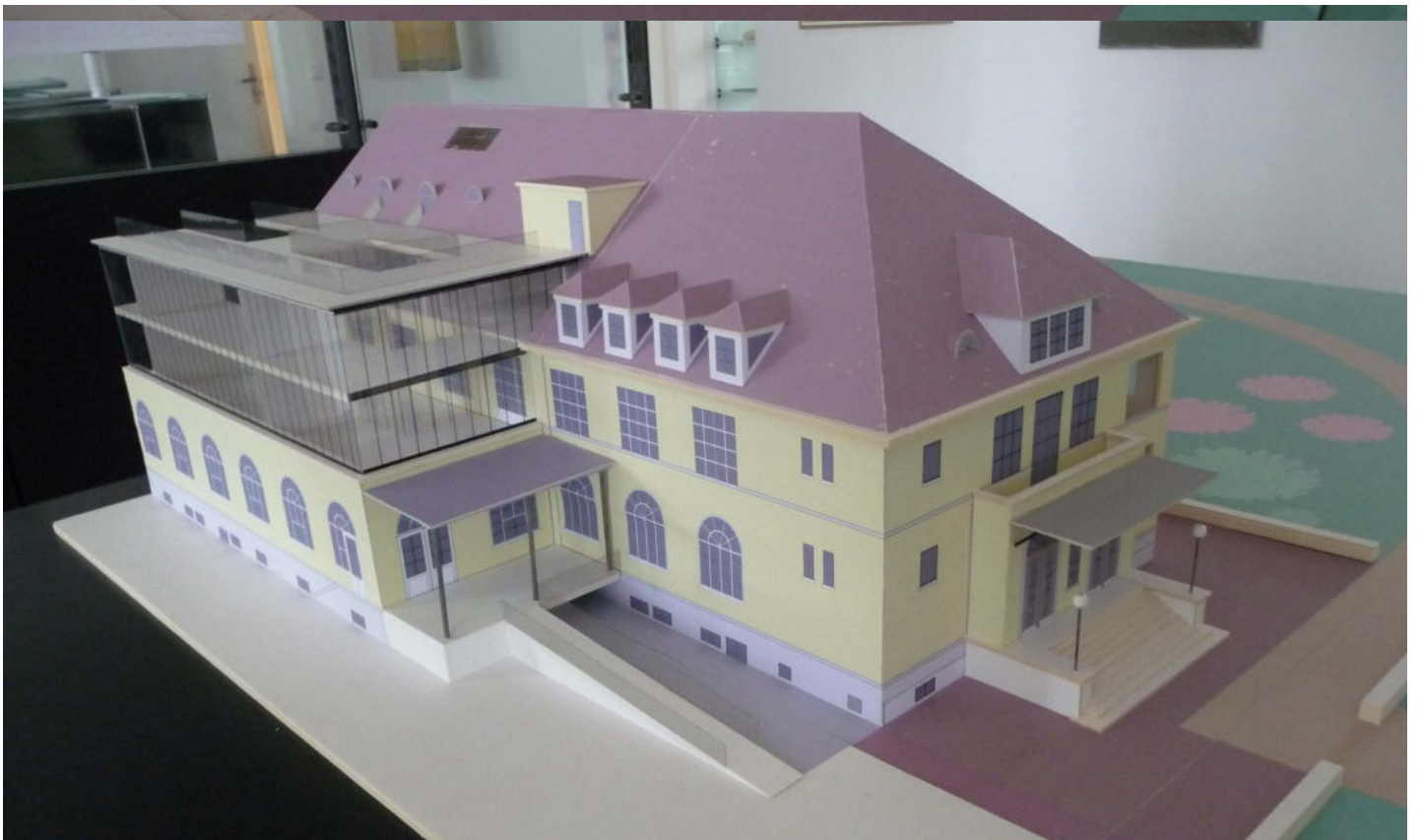
mst 1:1000

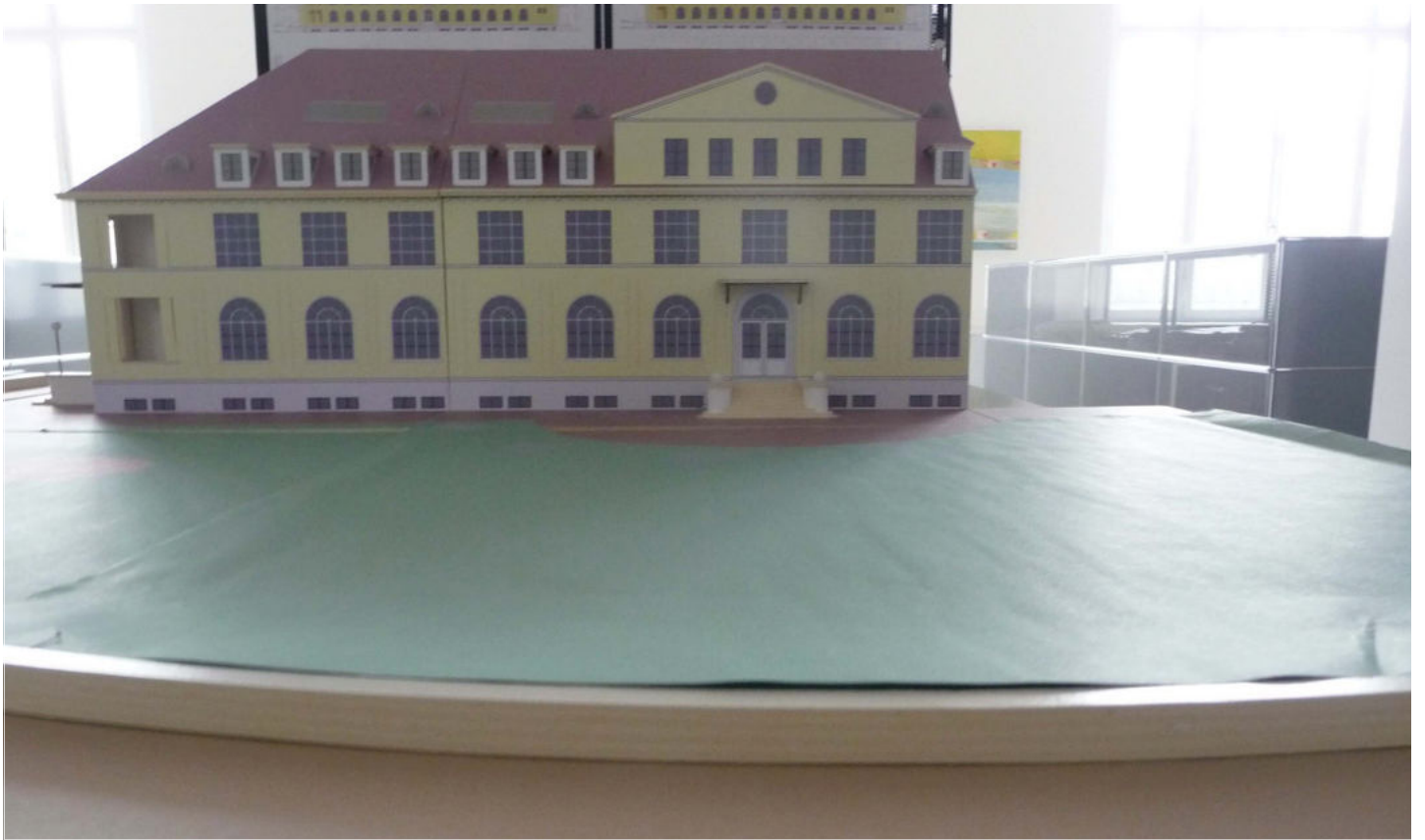
Übersicht Referenzprojekte

Beilage 3





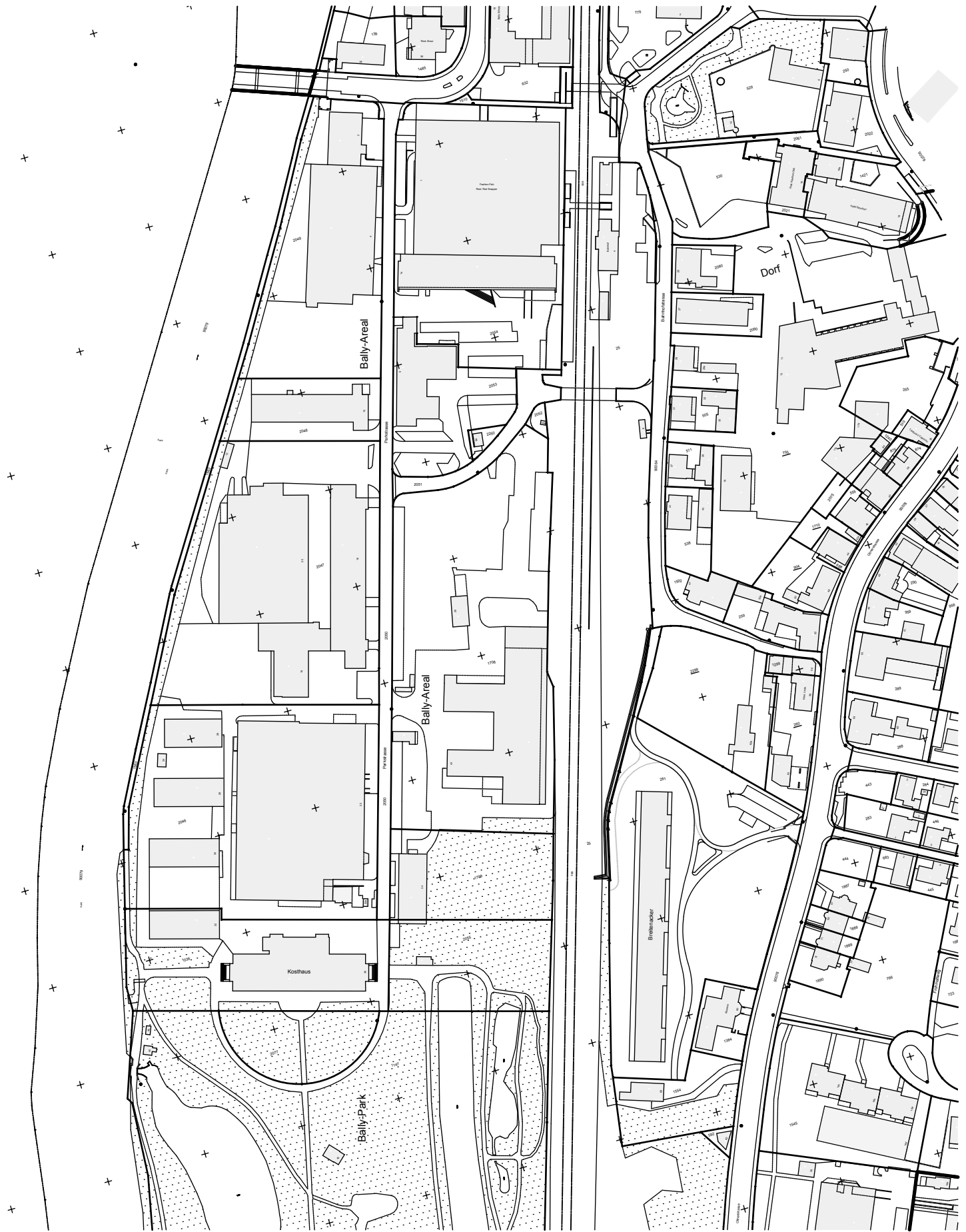






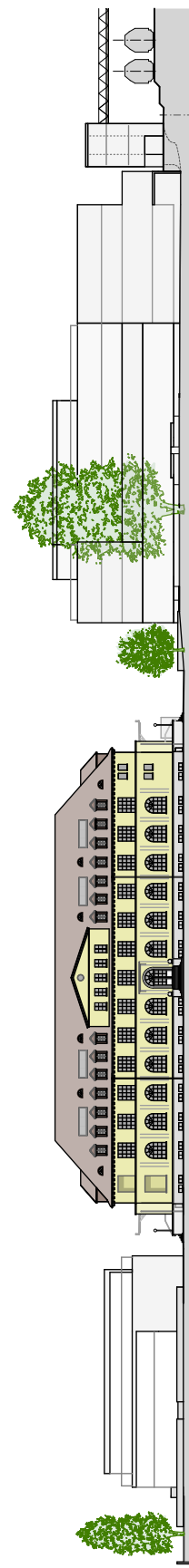




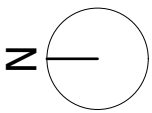


N
mst 1:2500

Katasterplan Bally-Areal, Schönenwerd

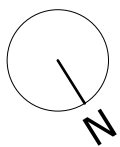
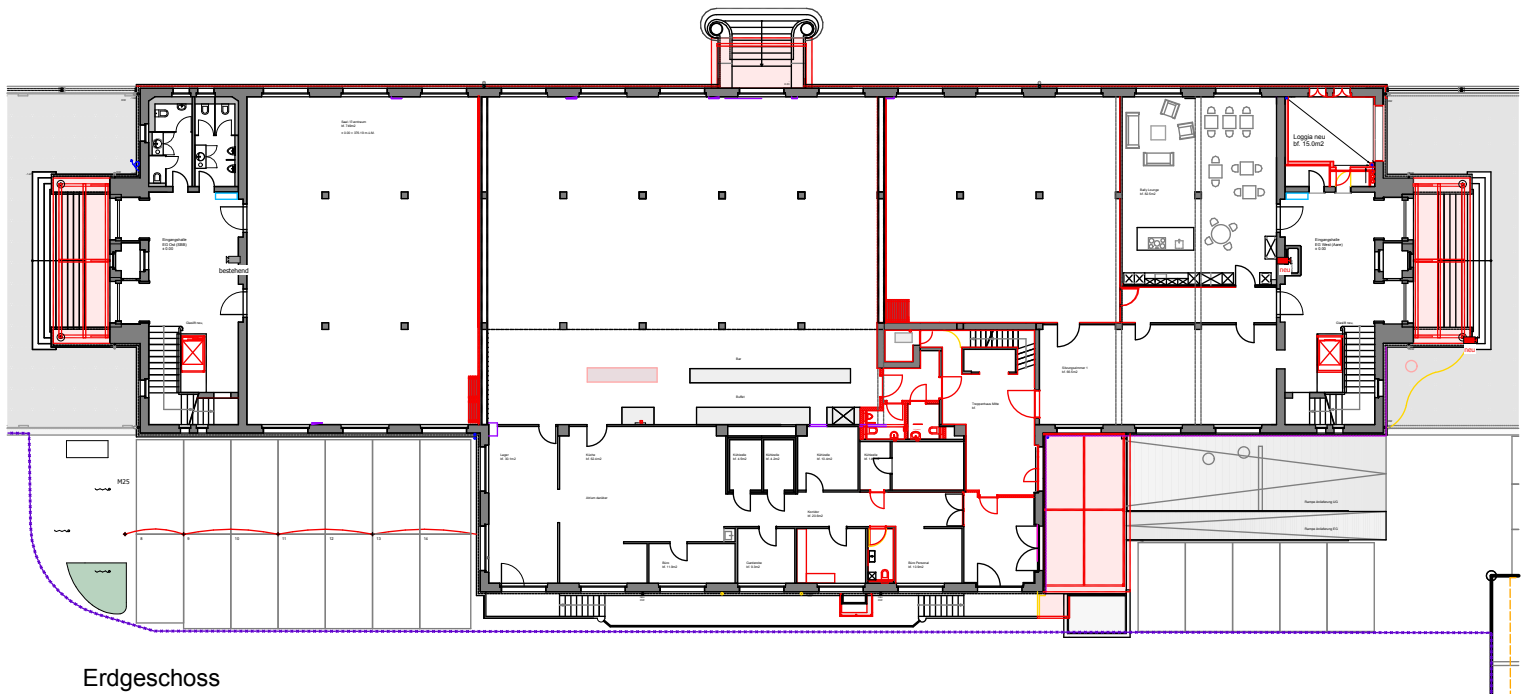
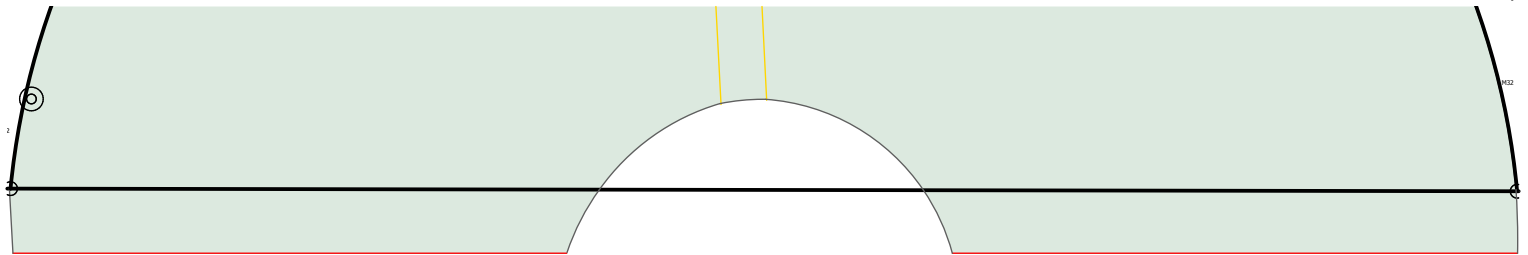
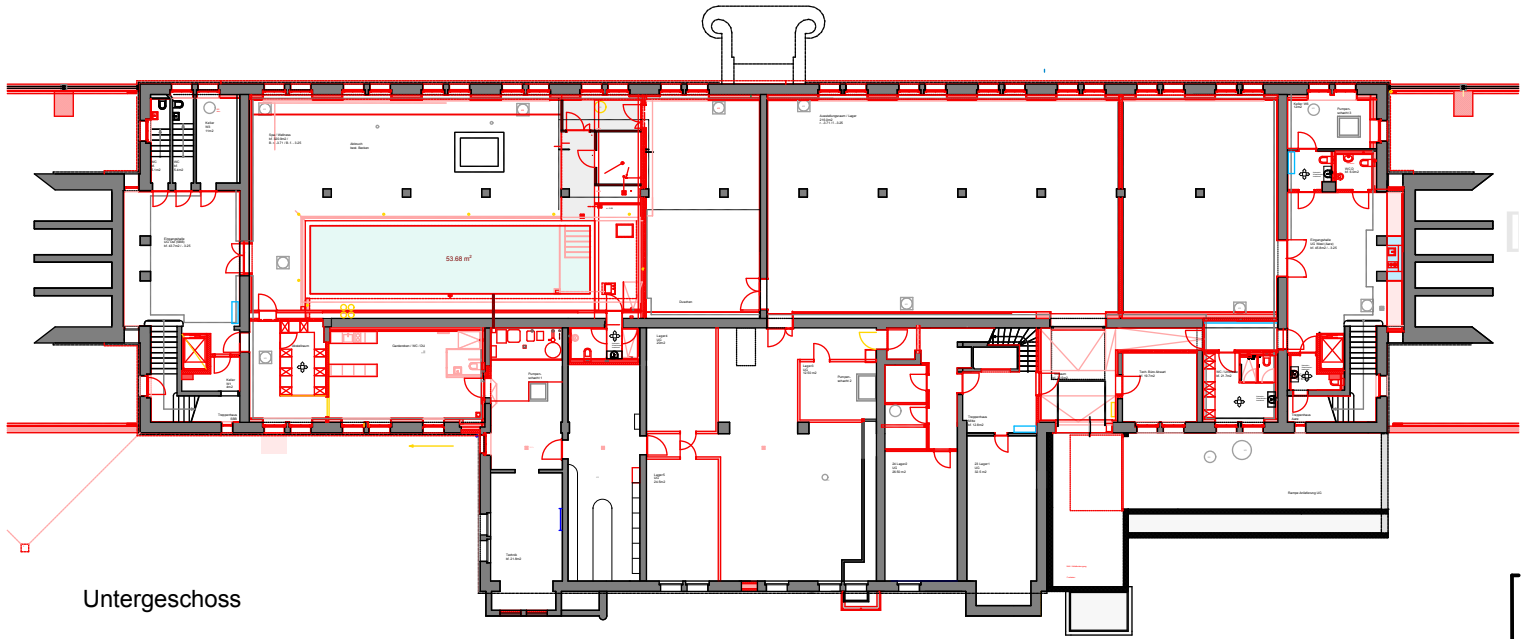


BB1 - Ballyhouse
BB2 - Villa Ballypark
BB3 - Haus am Ballypark
SBB

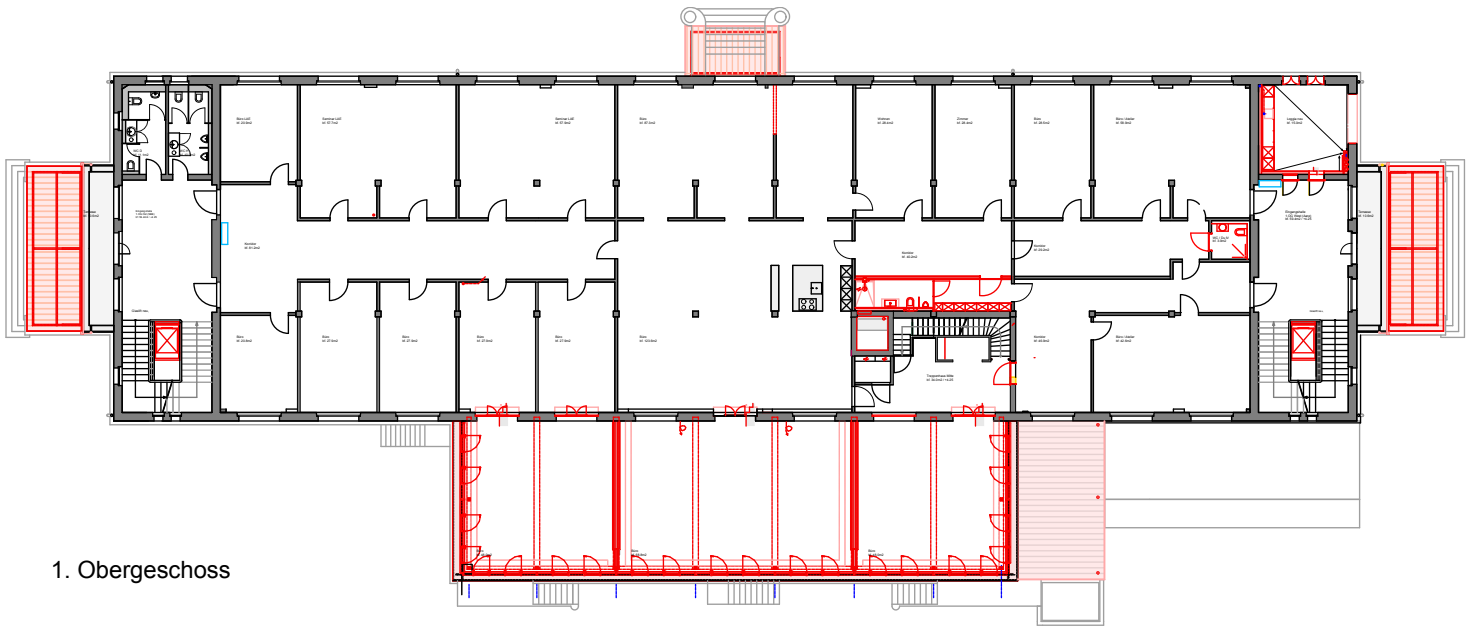


mst 1:1000

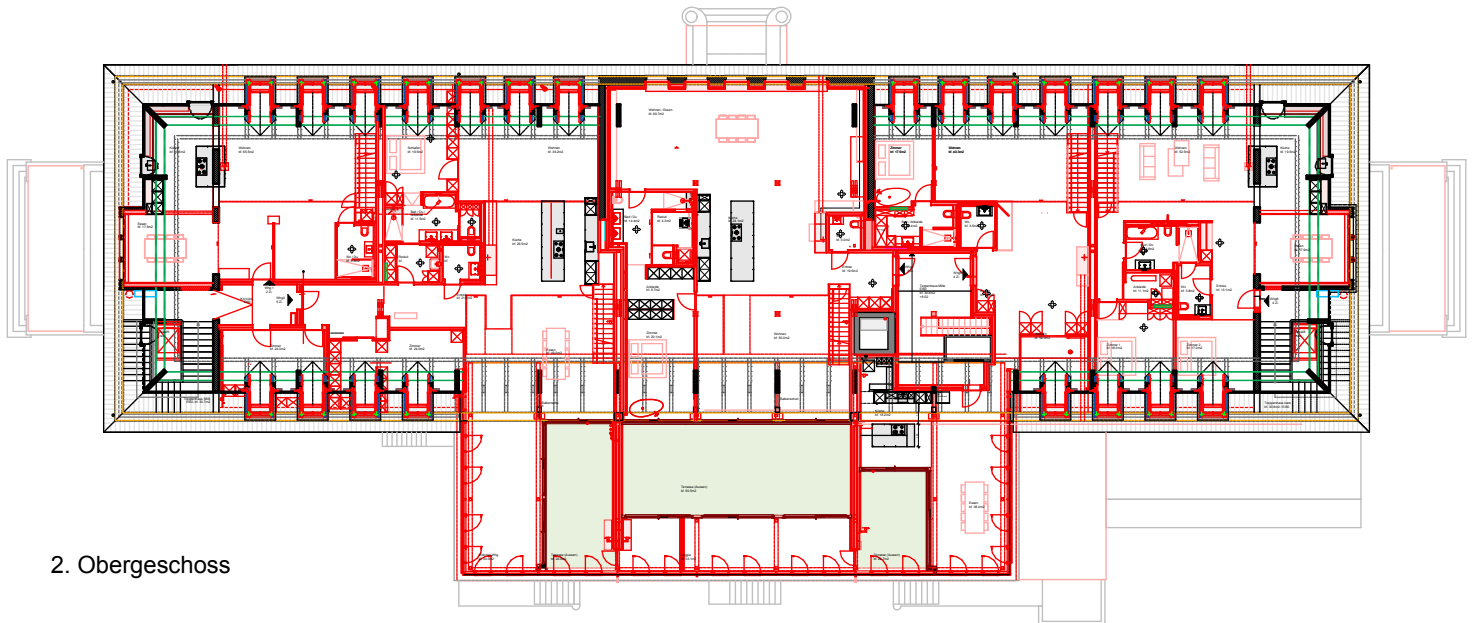
Raumplanungsbericht Gestaltungsplan
Beilagen



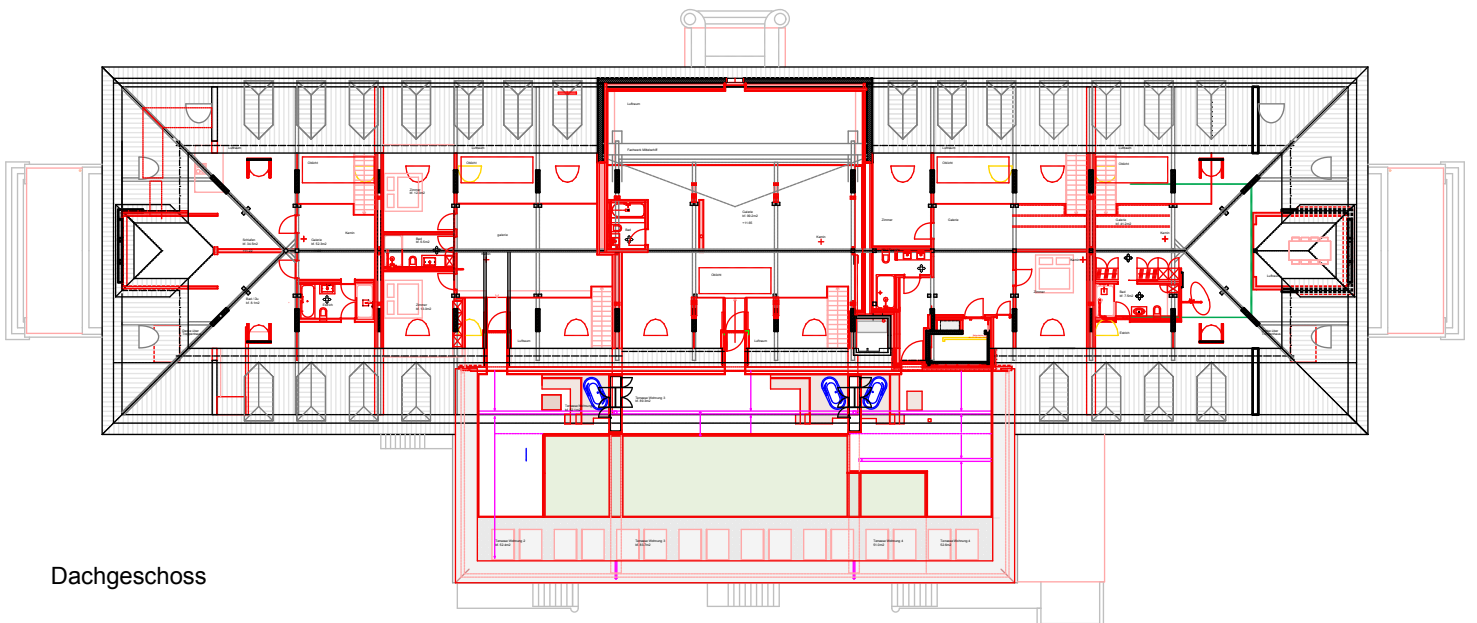
mst 1:400



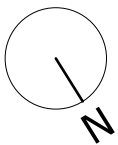
1. Obergeschoss



2. Obergeschoss

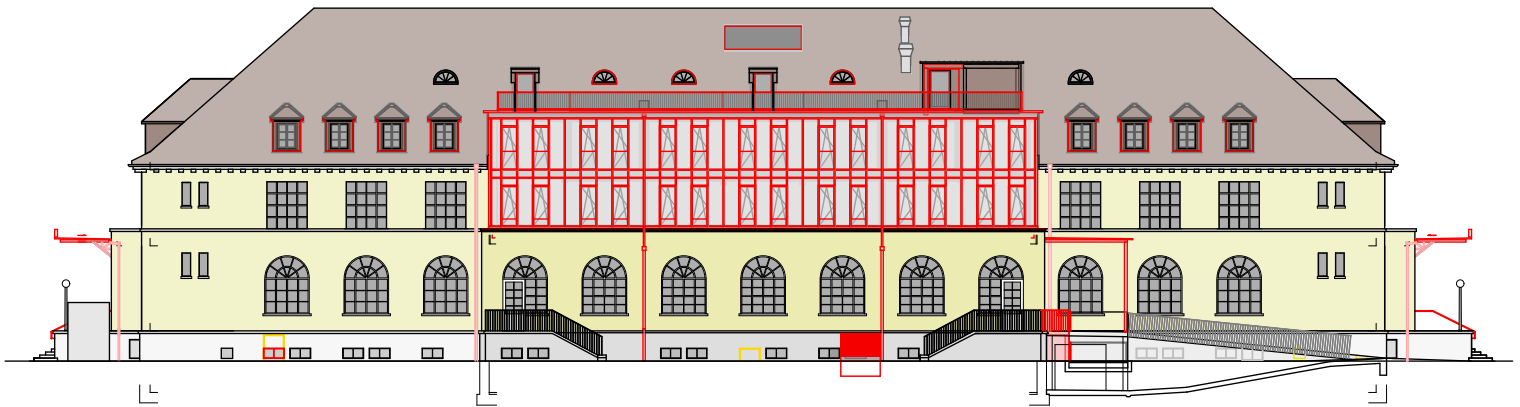


Dachgeschoss

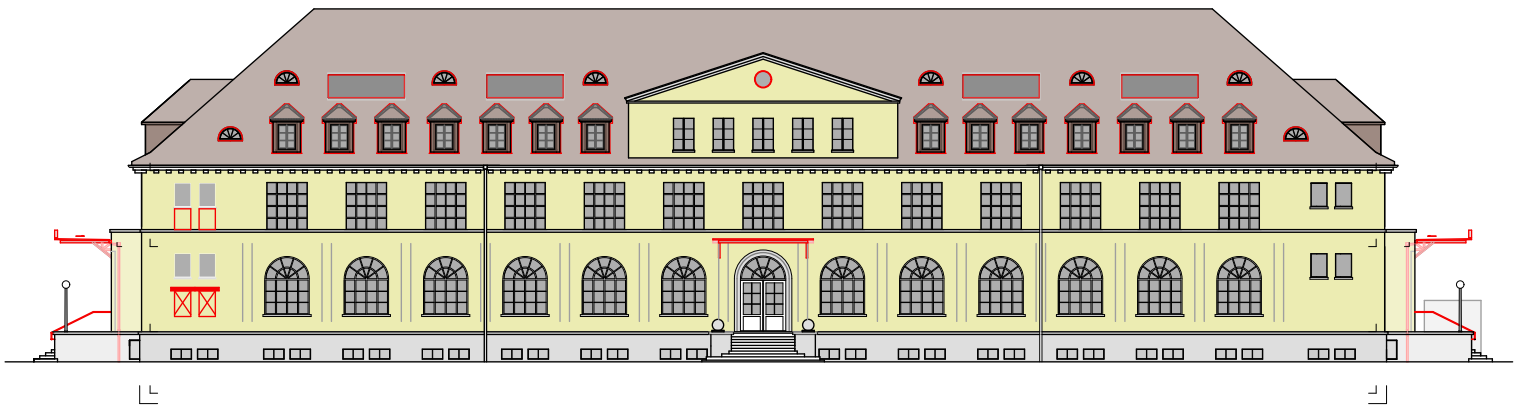


mst 1:400

Raumplanungsbericht Gestaltungsplan
Beilagen



Nordfassade



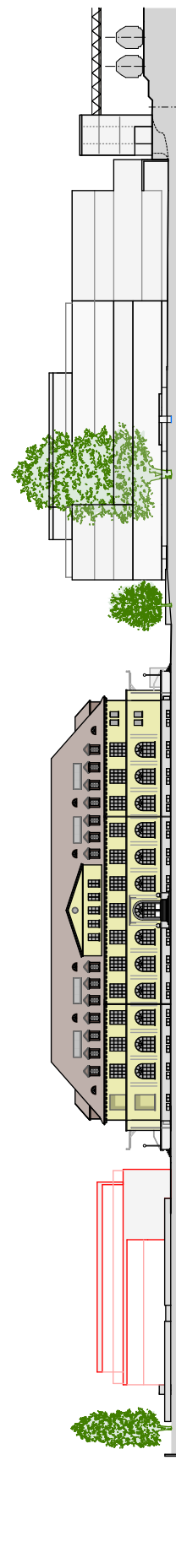
Südfassade



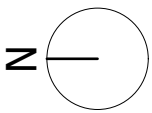
Ostfassade



Westfassade



BB2 - Villa Ballypark
BB1 - Ballyhouse
BB3 - Haus am Ballypark
SBB

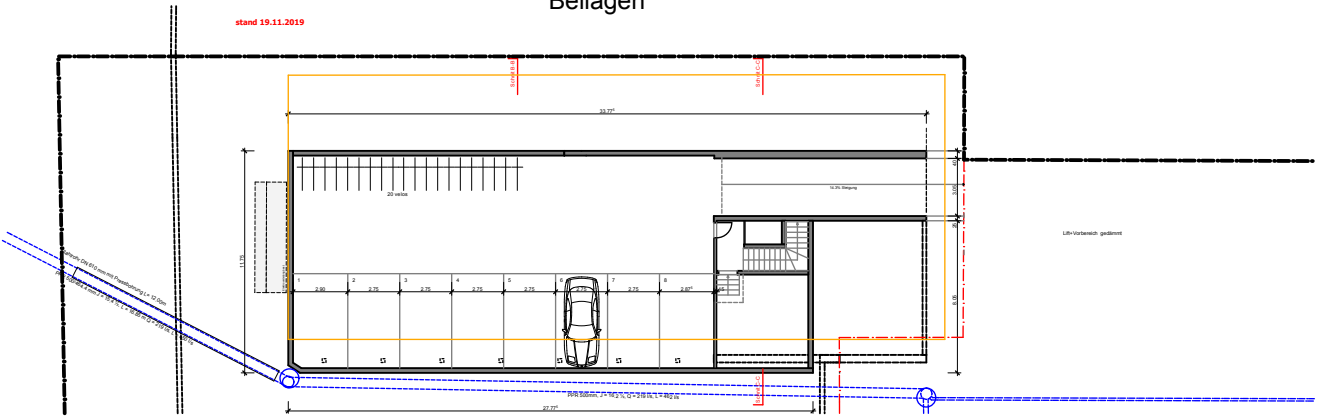


mst 1:1000

Raumplanungsbericht Gestaltungsplan Beilagen

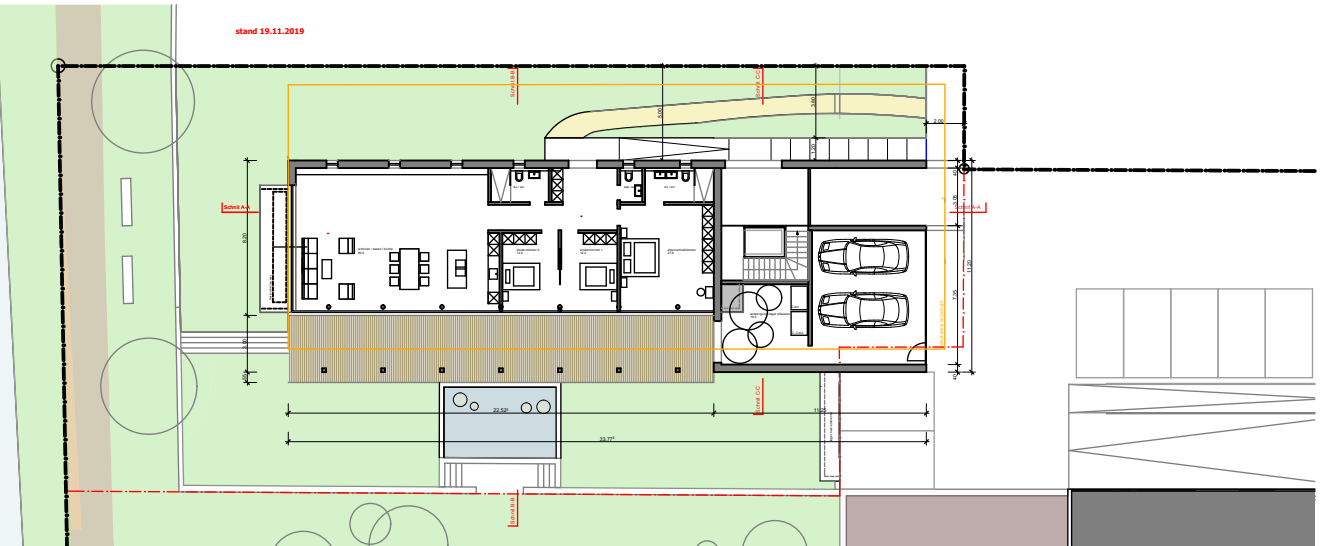
stand 19.11.2019

1. UG



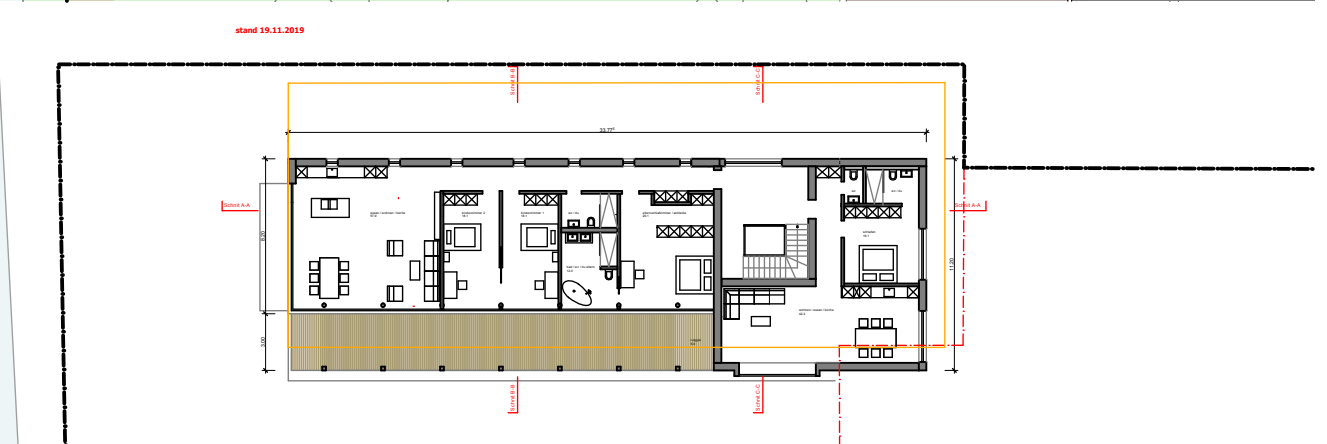
EG

stand 19.11.2019



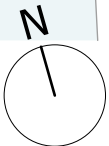
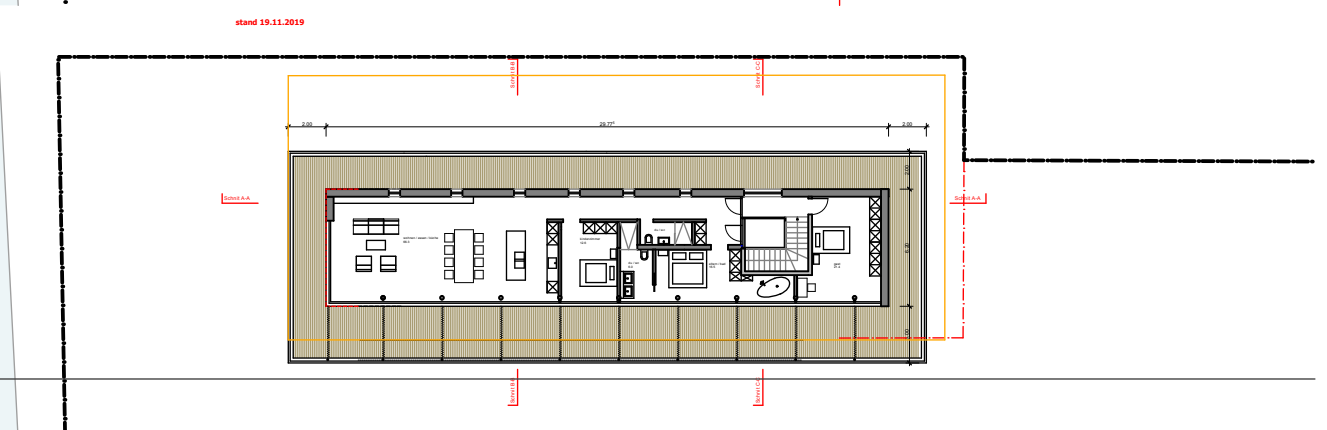
1.OG

stand 19.11.2019



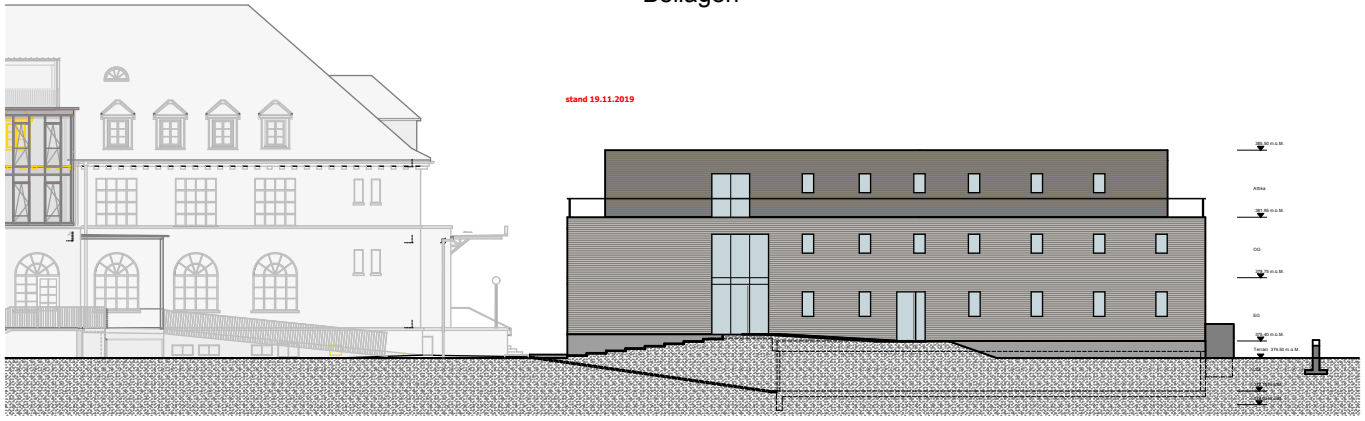
2.OG

stand 19.11.2019

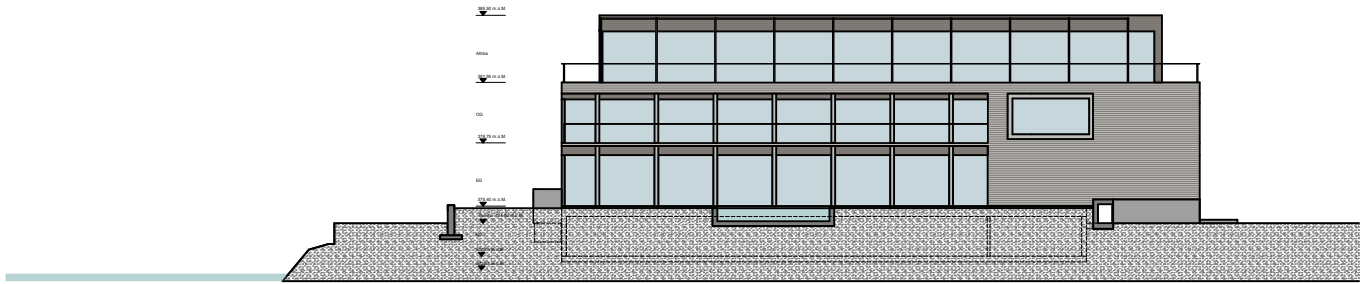


mst 1:400

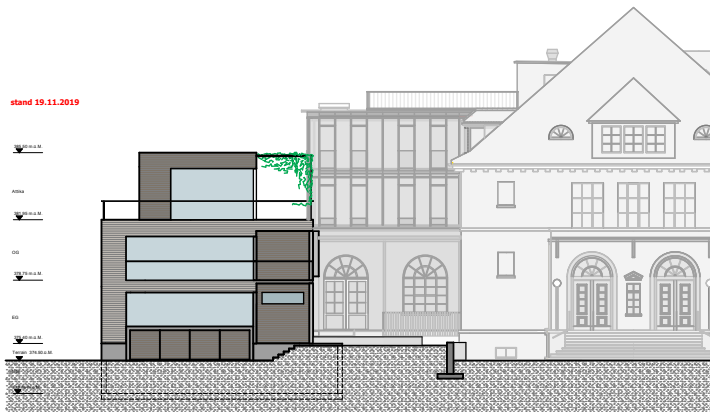
Raumplanungsbericht Gestaltungsplan
Beilagen



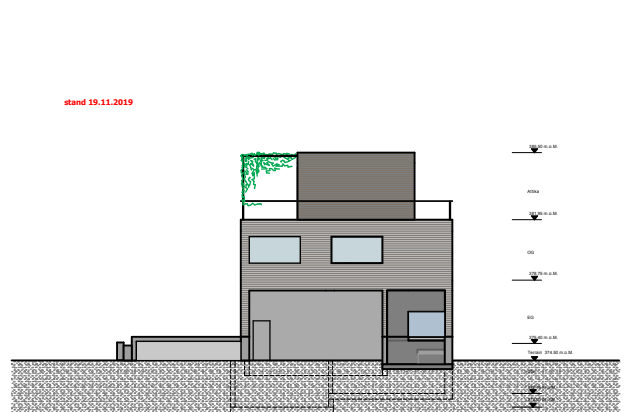
Nordfassade



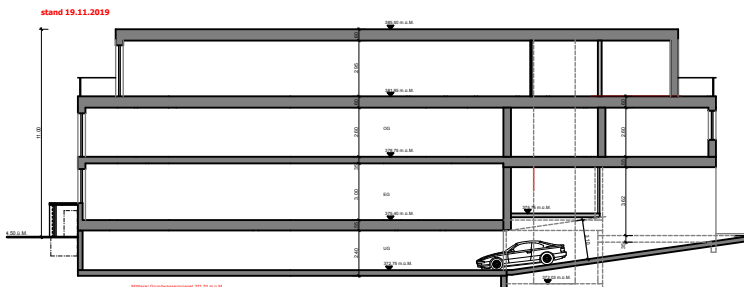
Südfassade



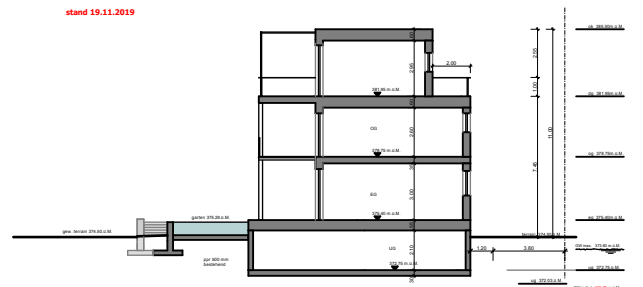
Westfassade



Ostfassade



Schnitt A-A



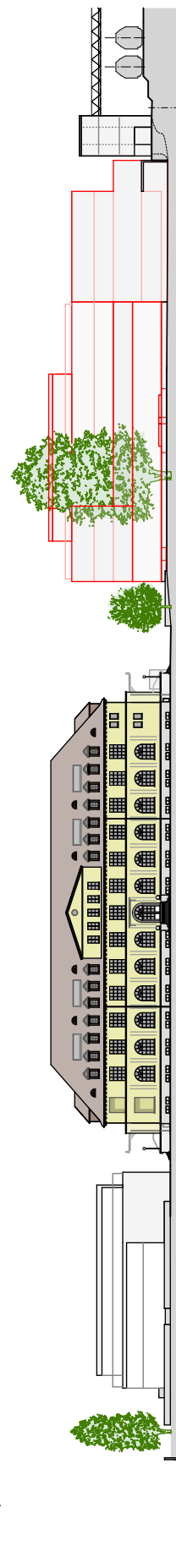
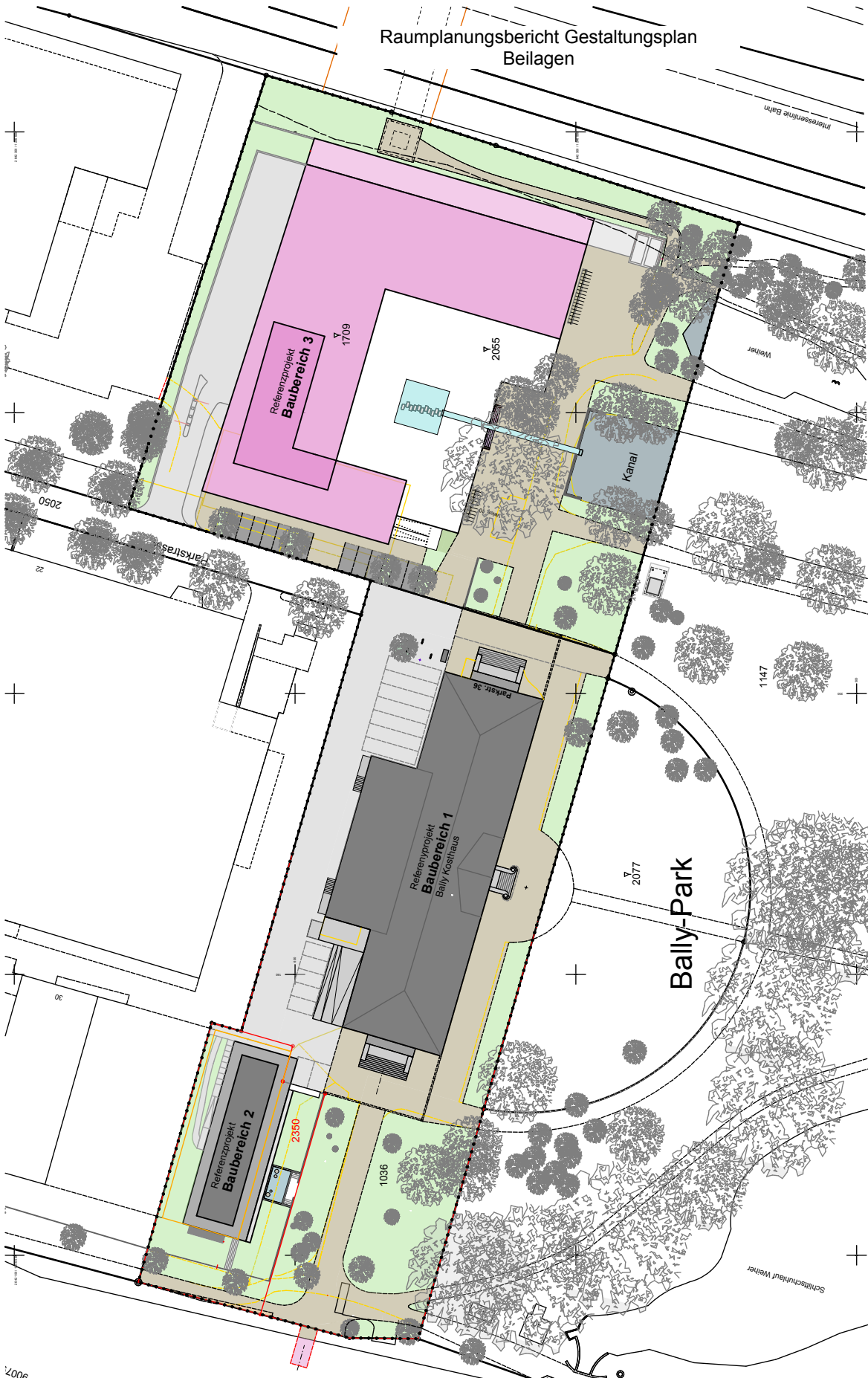
Schnitt B-B

Schnitte / Fassaden

mst 1:400

Referenzprojekt - Baufeld 2

Beilage 8



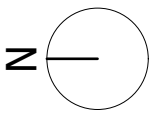
SBB

BB3 - Haus am Ballypark

BB1 - Ballyhouse

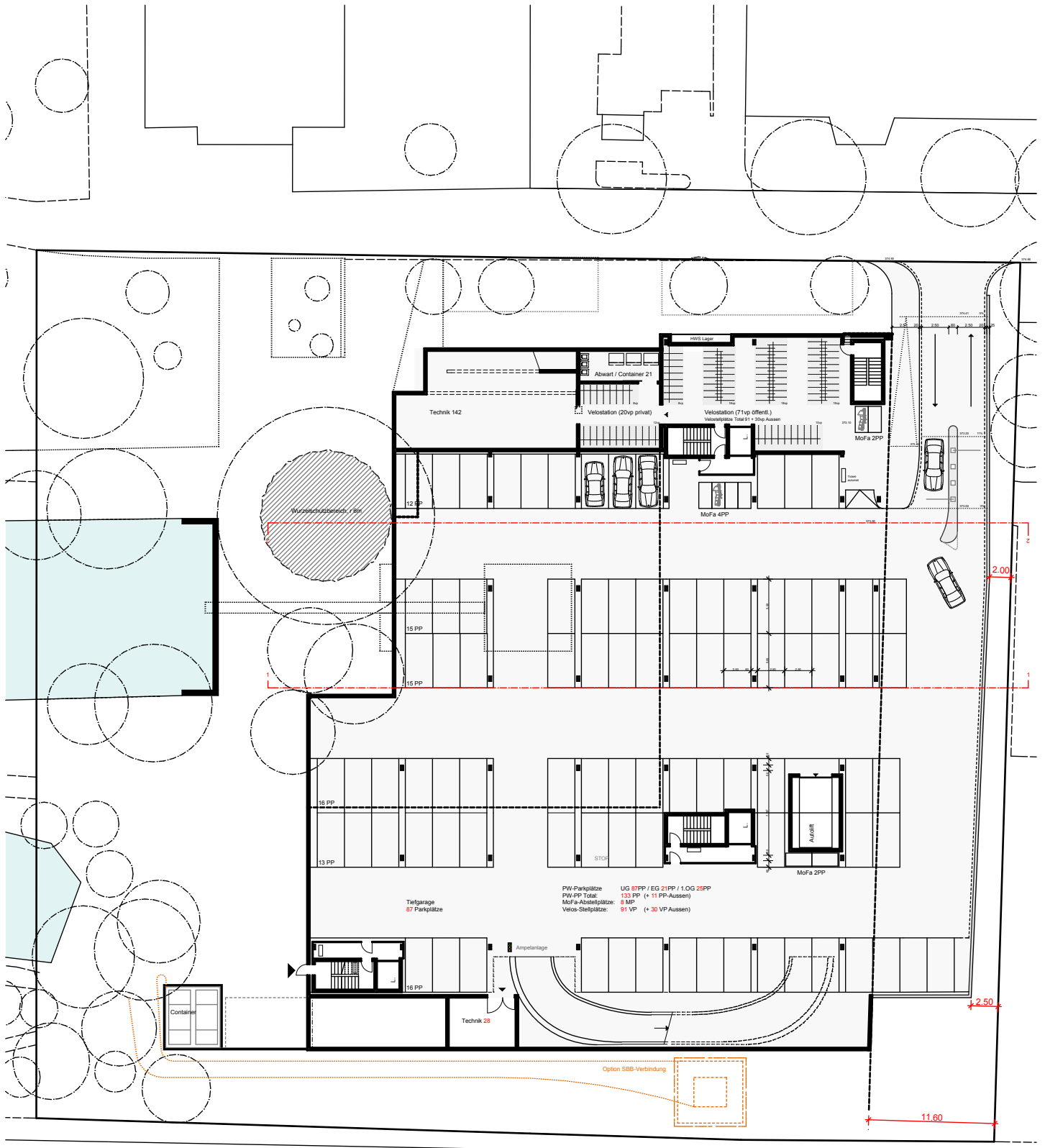
BB2 - Villa Ballypark

Aare

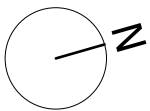


mst 1:1000

Raumplanungsbericht Gestaltungsplan
Beilagen



1. Untergeschoss

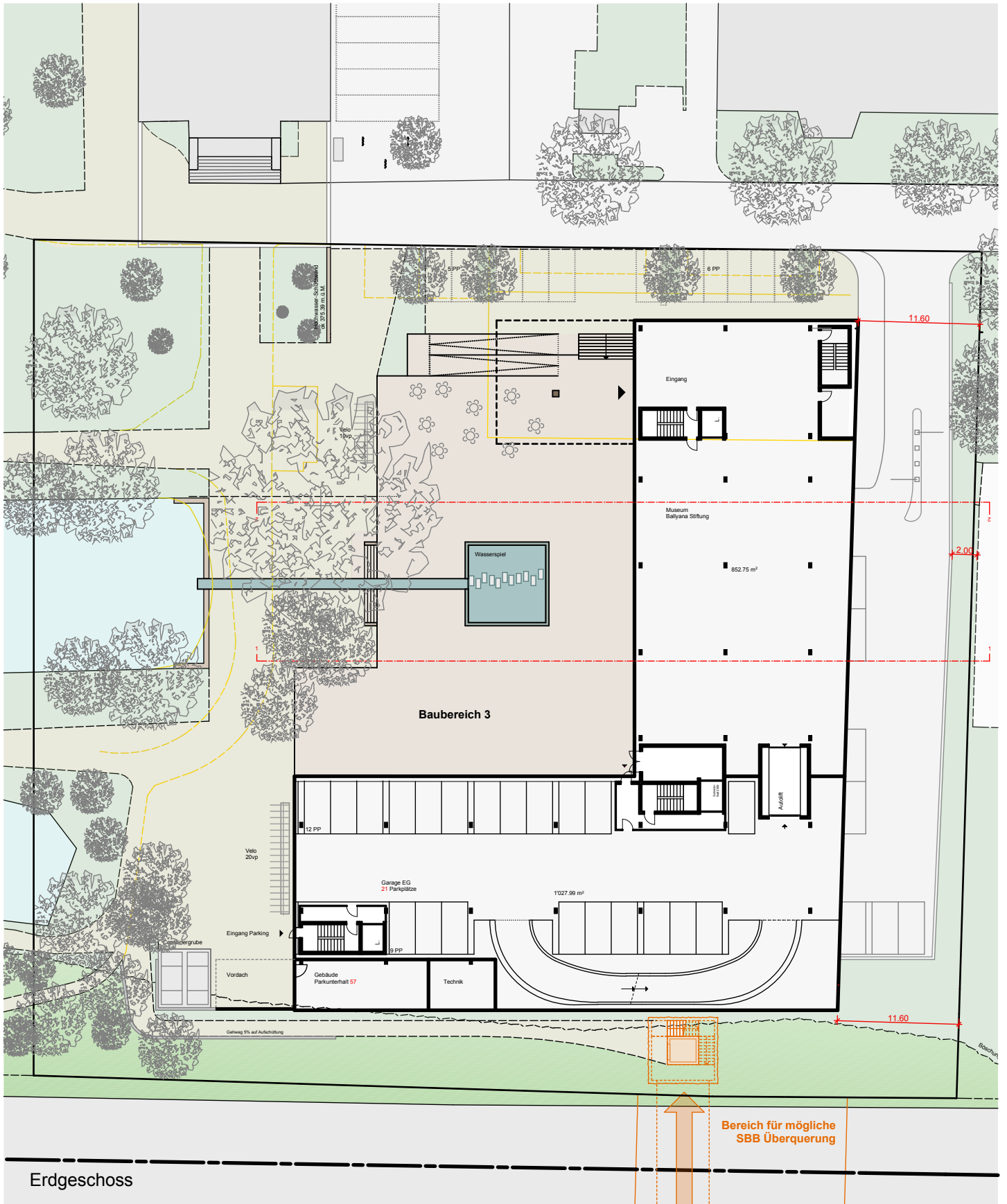


mst 1:500

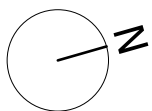
Referenzprojekt - Baufeld 3

Beilage 9

Raumplanungsbericht Gestaltungsplan
Beilagen

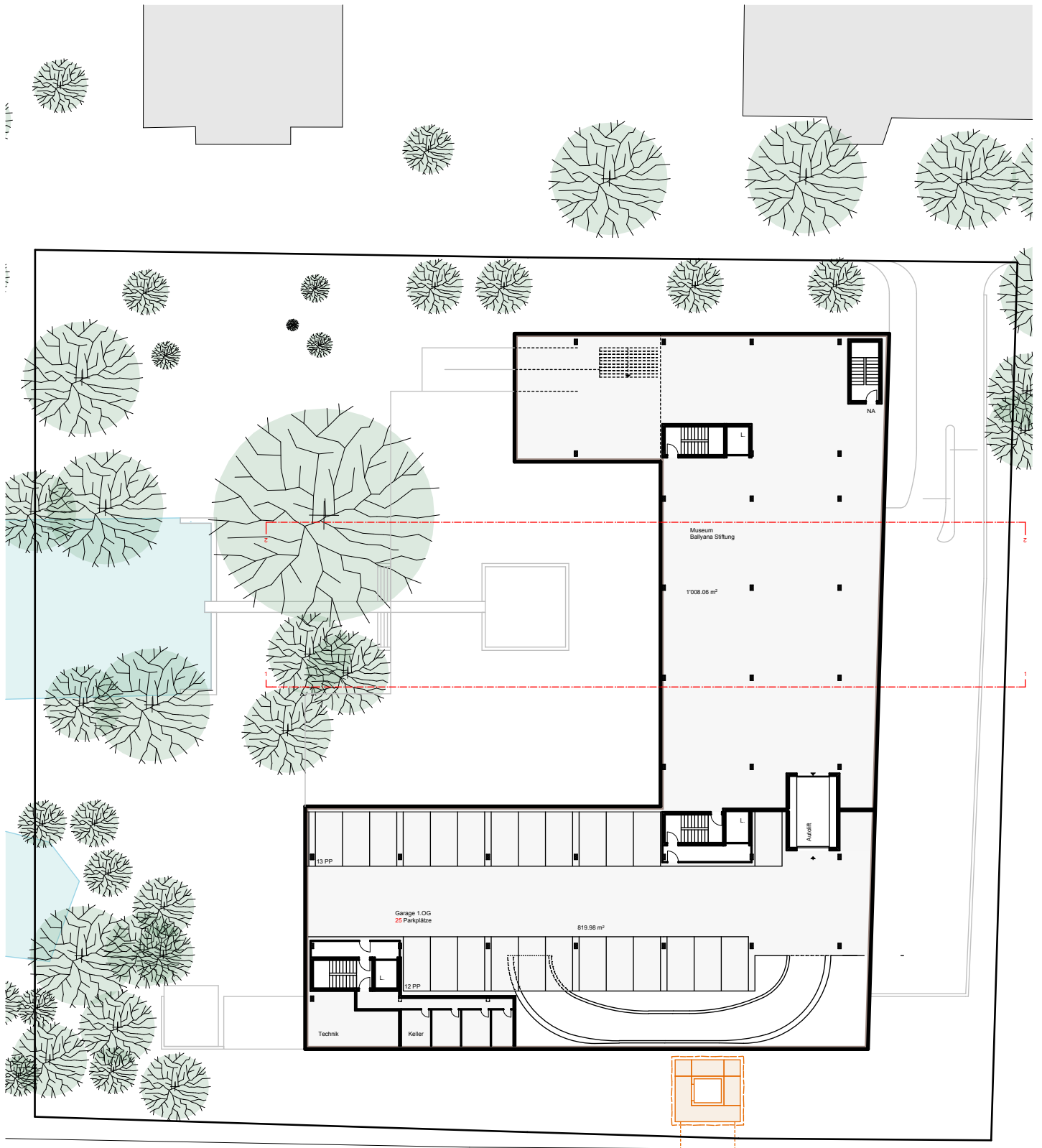


Erdgeschoss

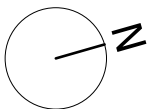


mst 1:500

Raumplanungsbericht Gestaltungsplan
Beilagen

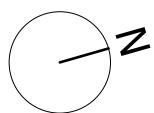
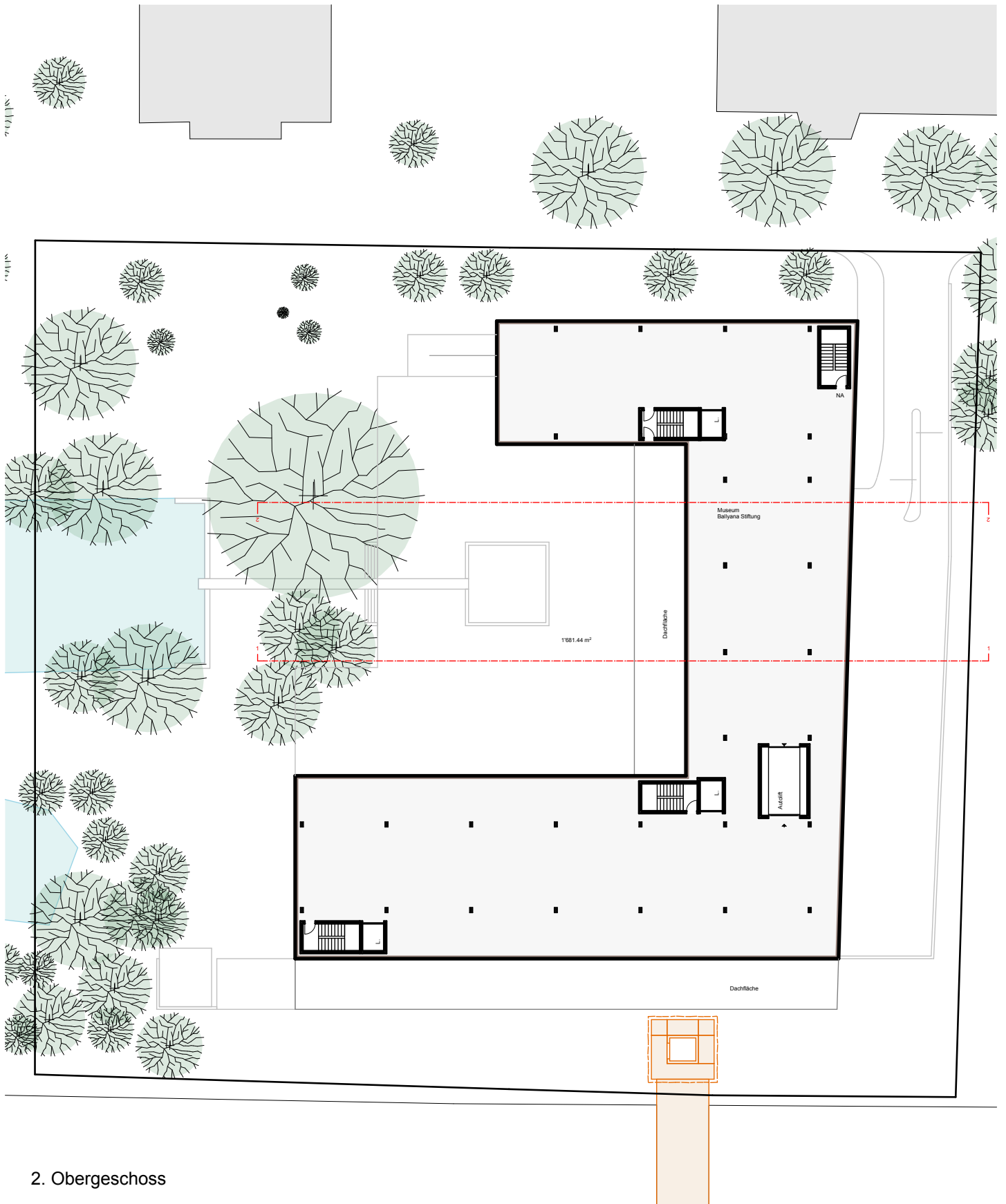


1. Obergeschoss



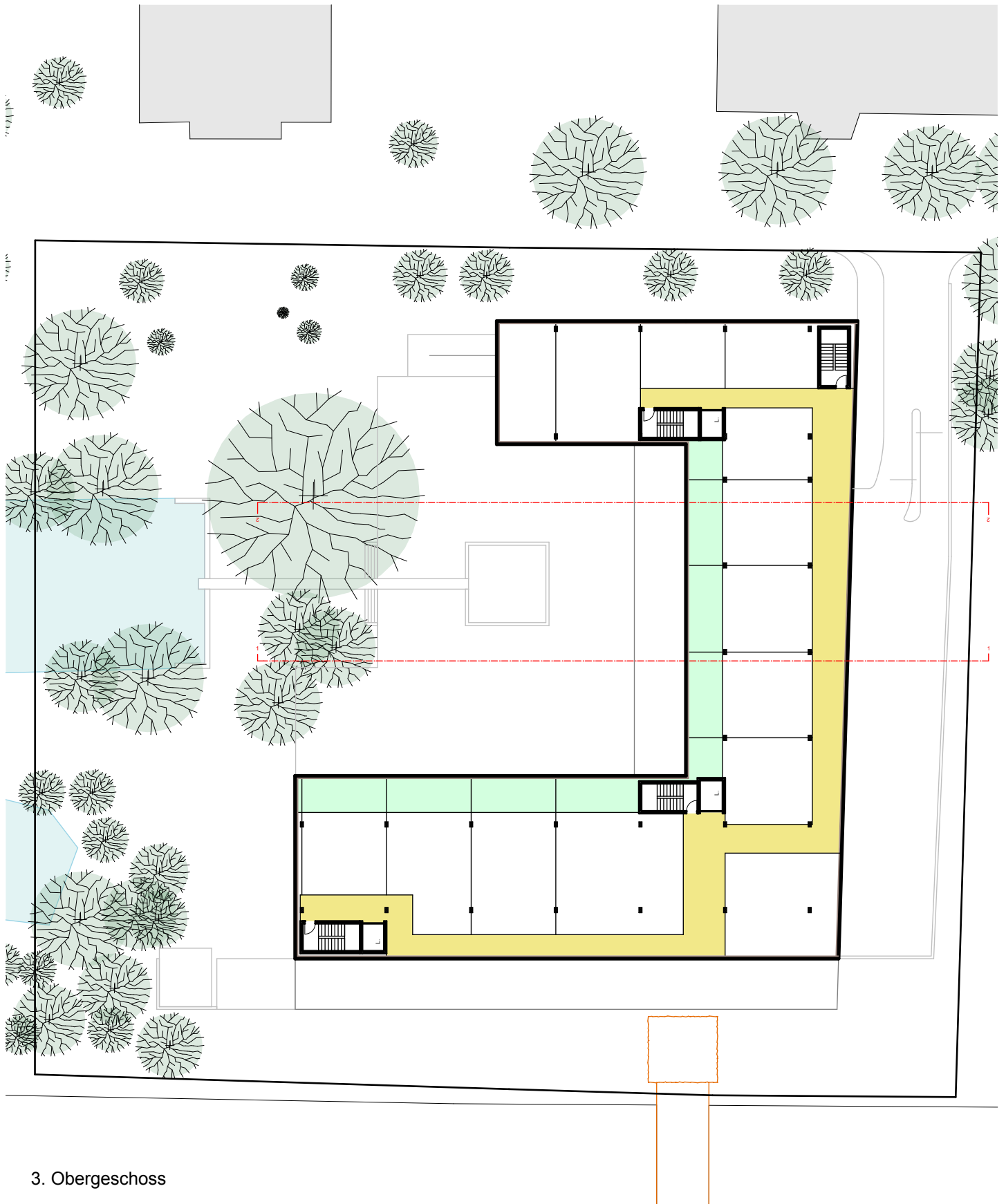
mst 1:500

Raumplanungsbericht Gestaltungsplan
Beilagen

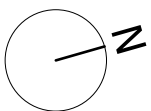


mst 1:500

Raumplanungsbericht Gestaltungsplan
Beilagen



3. Obergeschoss

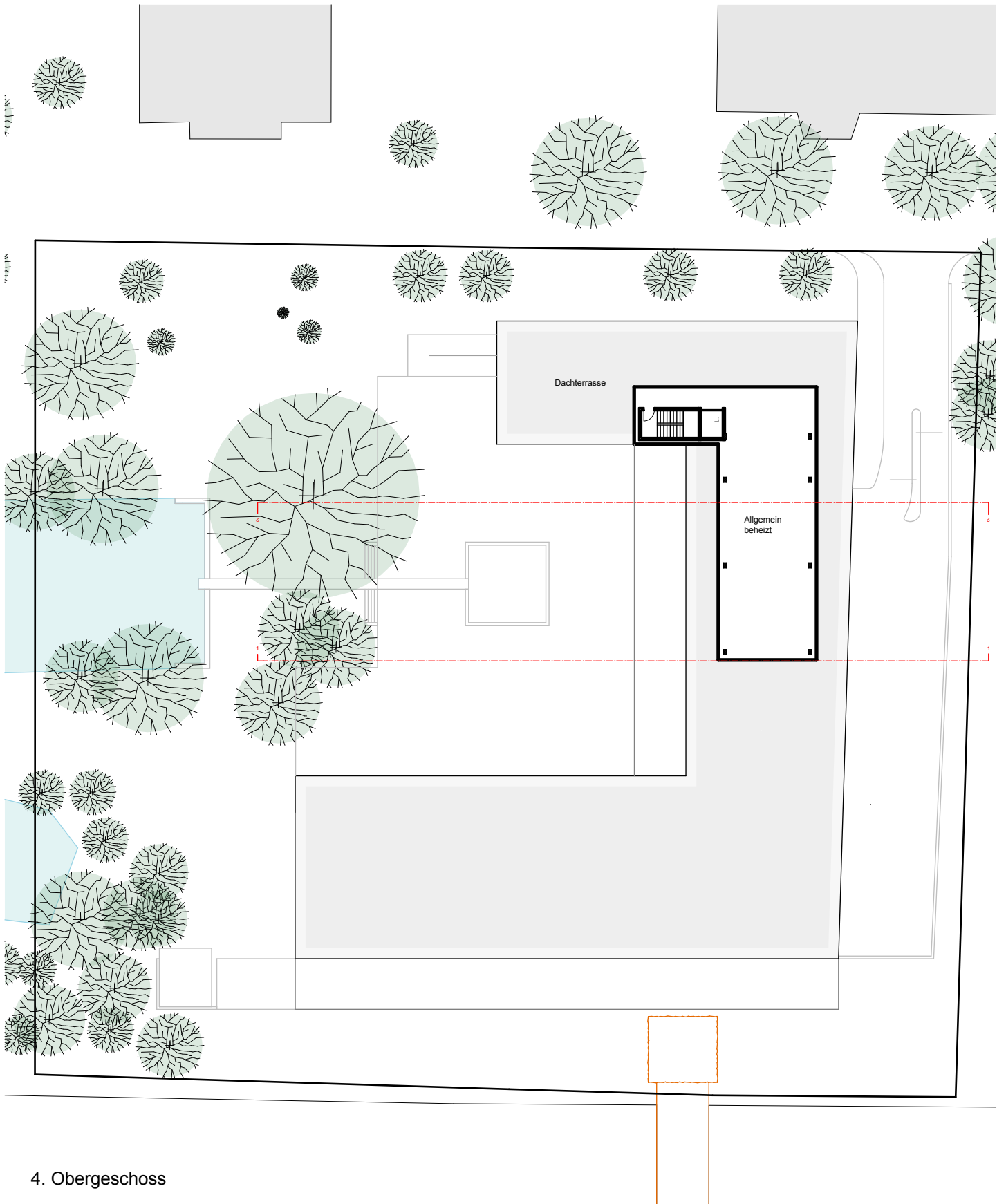


mst 1:500

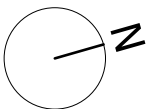
Referenzprojekt - Baufeld 3

Beilage 9

Raumplanungsbericht Gestaltungsplan
Beilagen

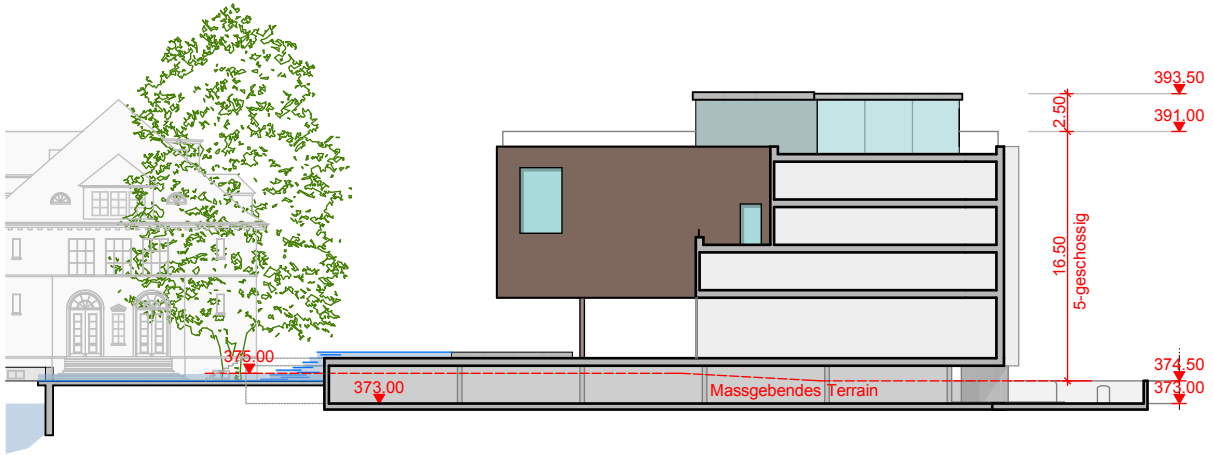


4. Obergeschoss

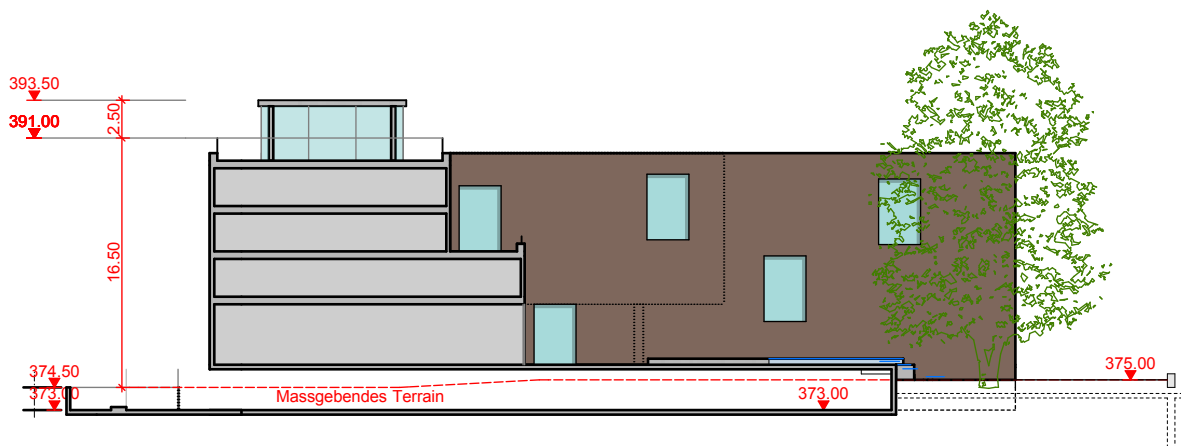


mst 1:500

Raumplanungsbericht Gestaltungsplan
Beilagen



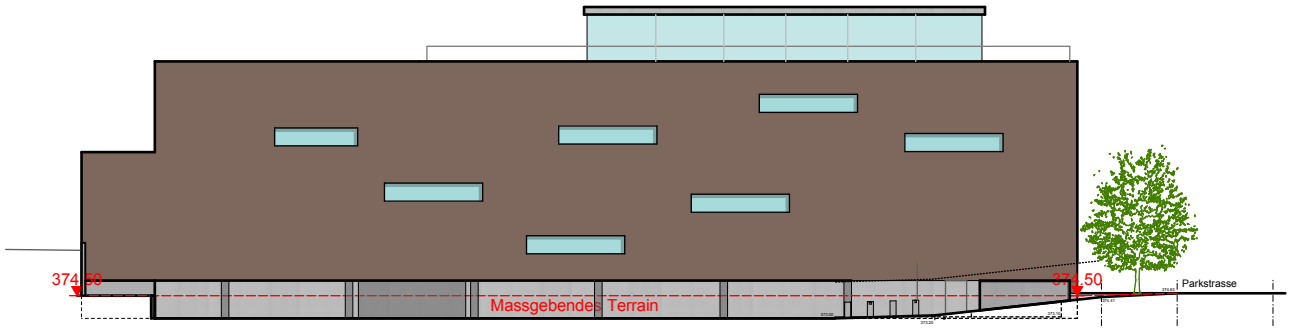
Ansicht Ost Innenhof / Schnitt 1



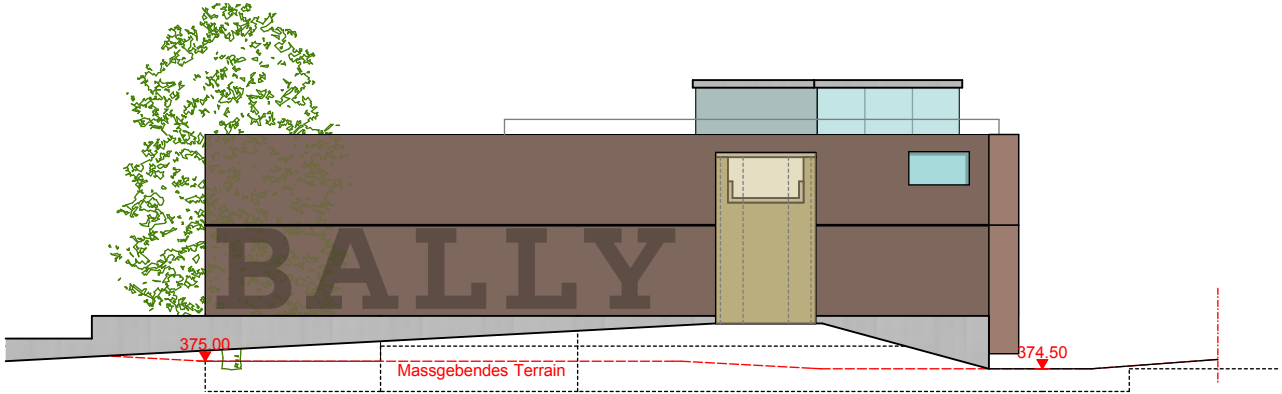
Ansicht West Innenhof / Schnitt 2

Schnitte Variante 1 "Museum"

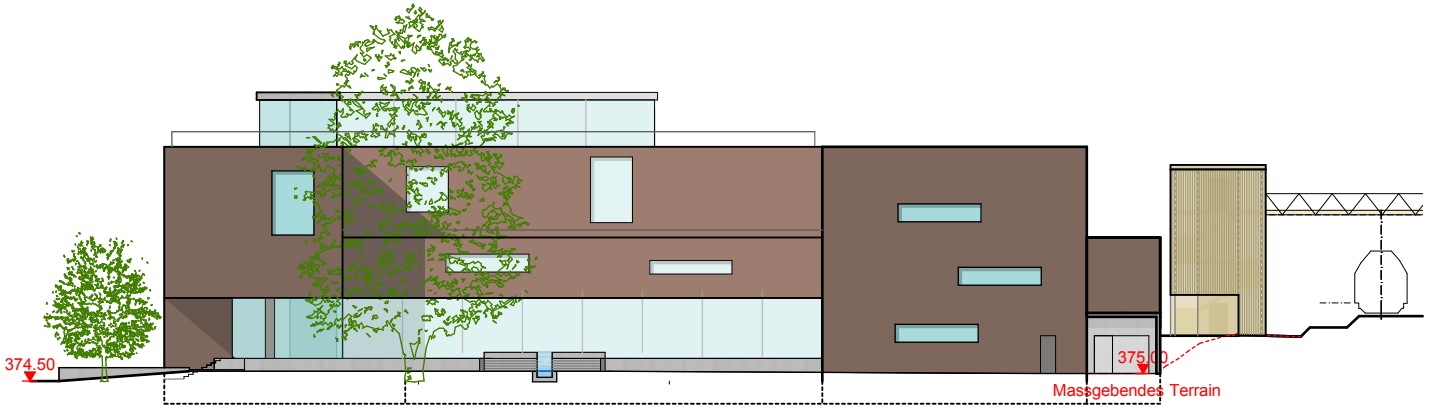
Raumplanungsbericht Gestaltungsplan
Beilagen



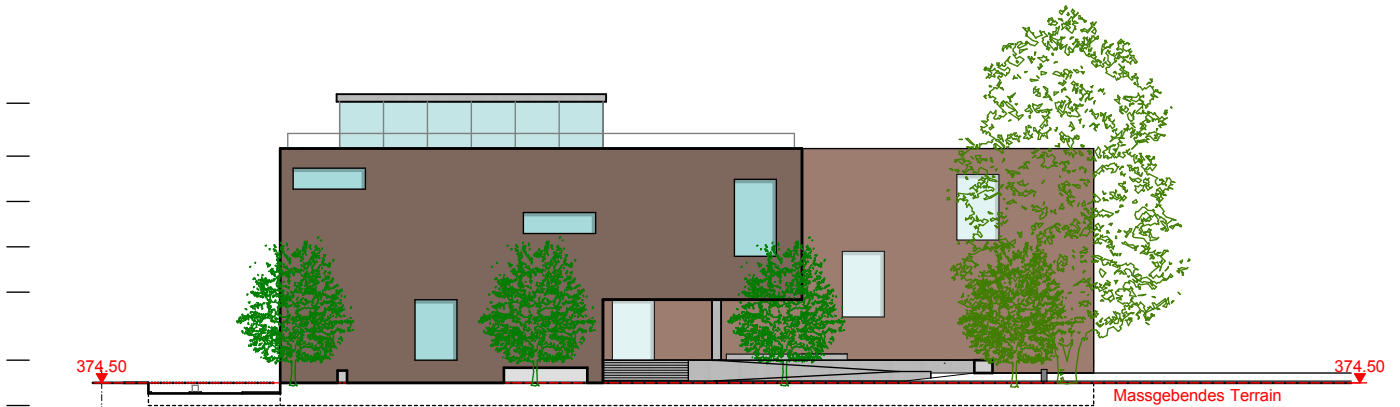
Ansicht Nord



Ansicht Ost



Ansicht Süd



Ansicht West

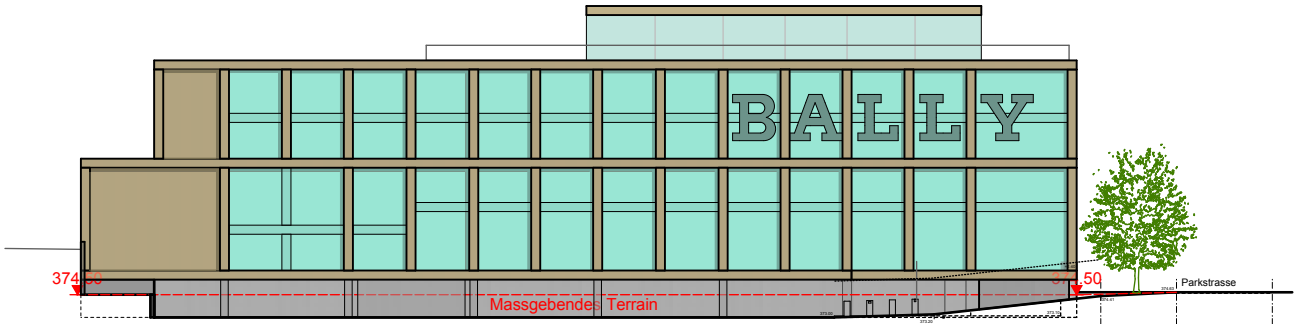
Fassaden Variante 1 " Museum "

Referenzprojekt - Baufeld 3

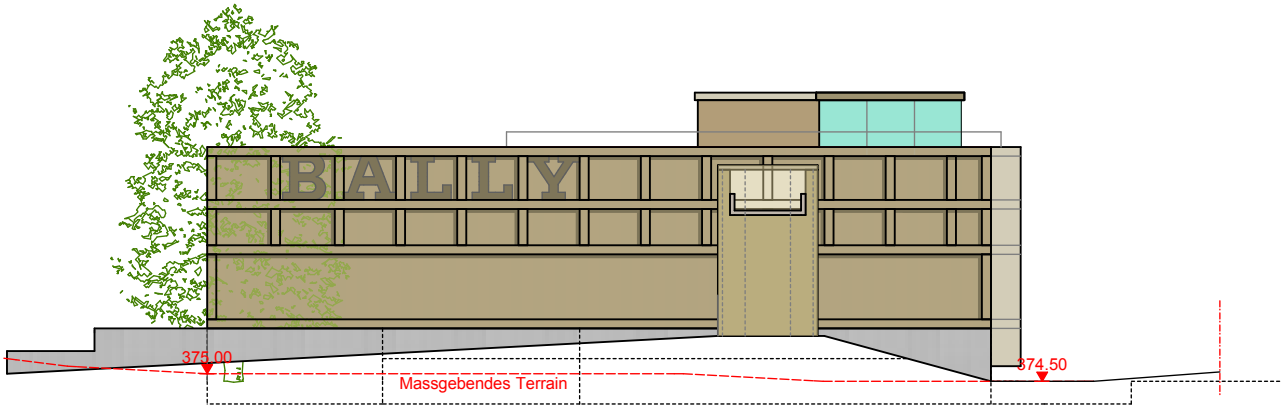
Beilage 9

mst 1:500

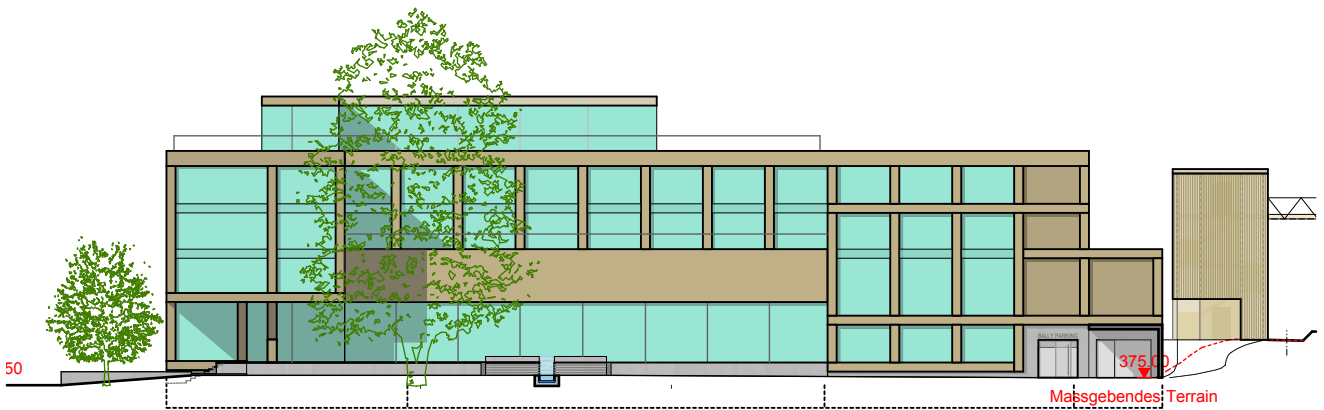
Raumplanungsbericht Gestaltungsplan
Beilagen



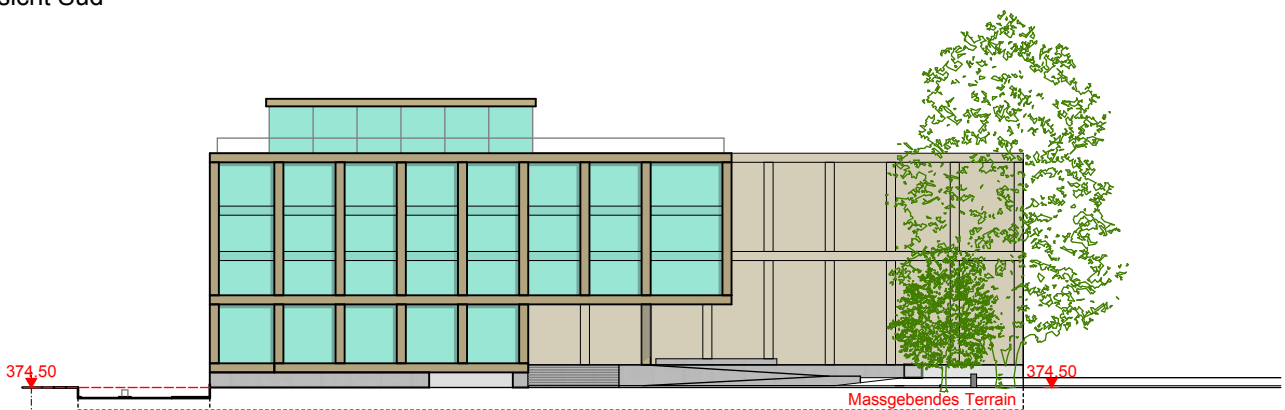
Ansicht Nord



Ansicht Ost



Ansicht Süd



Ansicht West

Fassaden Variante 2 " Arbeit, Freizeit, Wohnen "

Referenzprojekt - Baufeld 3

Beilage 9

mst 1:500